

# Southwest Power Pool, Inc. Corporate Metrics

for the period ending  
February 29, 2008



# Southwest Power Pool

## Corporate Metrics

### Table of Contents

Transmission & Market Indicators	
1	Active transmission limit control indicators
2	Regional control performance
3	Transmission utilization proxy
4	EIS prices and price range
5	Congestion
6	Market liquidity

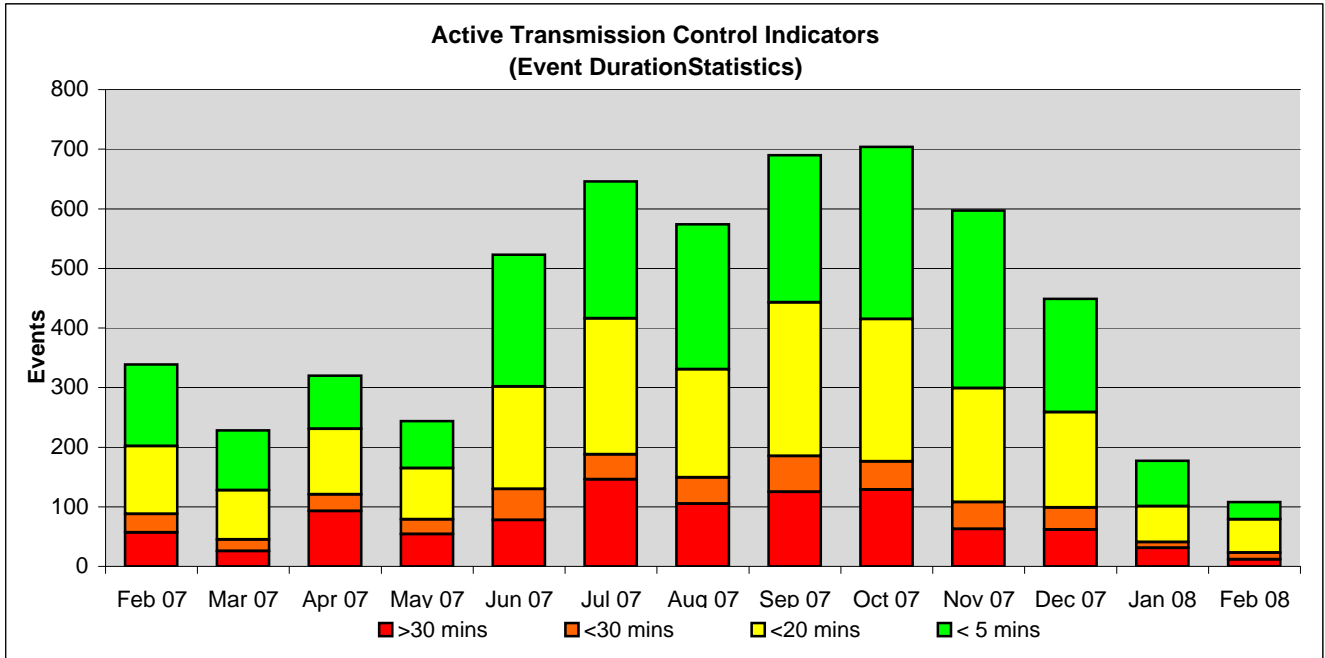
Financial Metrics	
7	SPP Admin Fee performance
8	Financial settlement index
9	Financial disputes index
10	Budget performance monitor

Learning & Growth	
11	Employee turnover

Performance	
12	SPP NERC compliance

13 Metrics Definitions

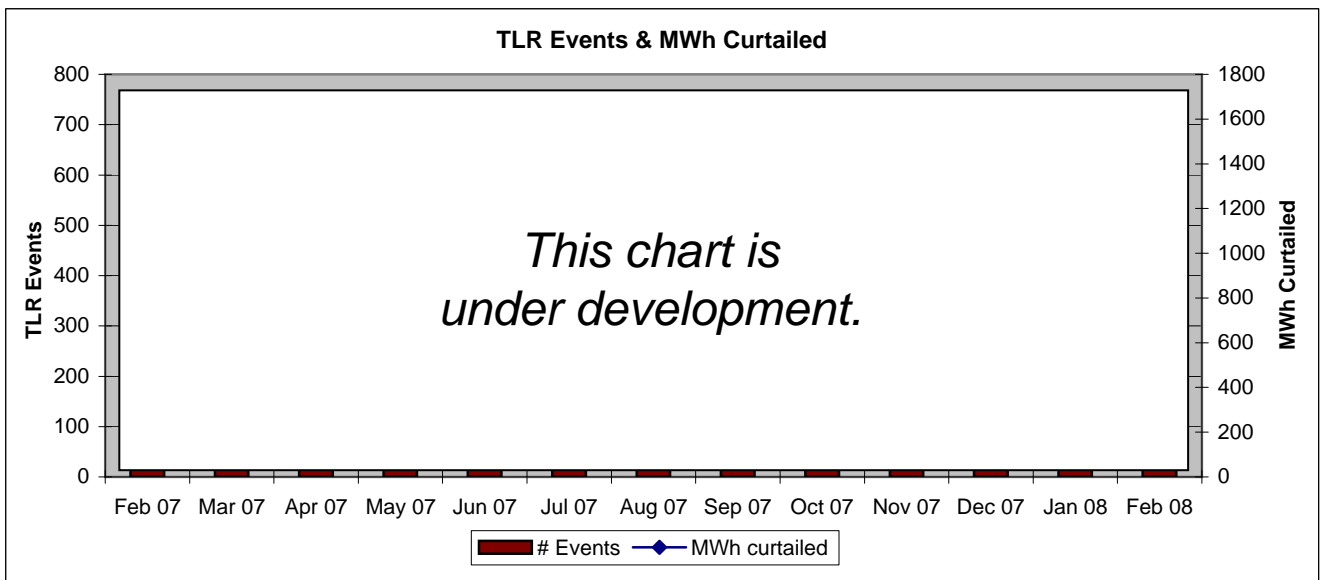
1. Active transmission limit control indicators



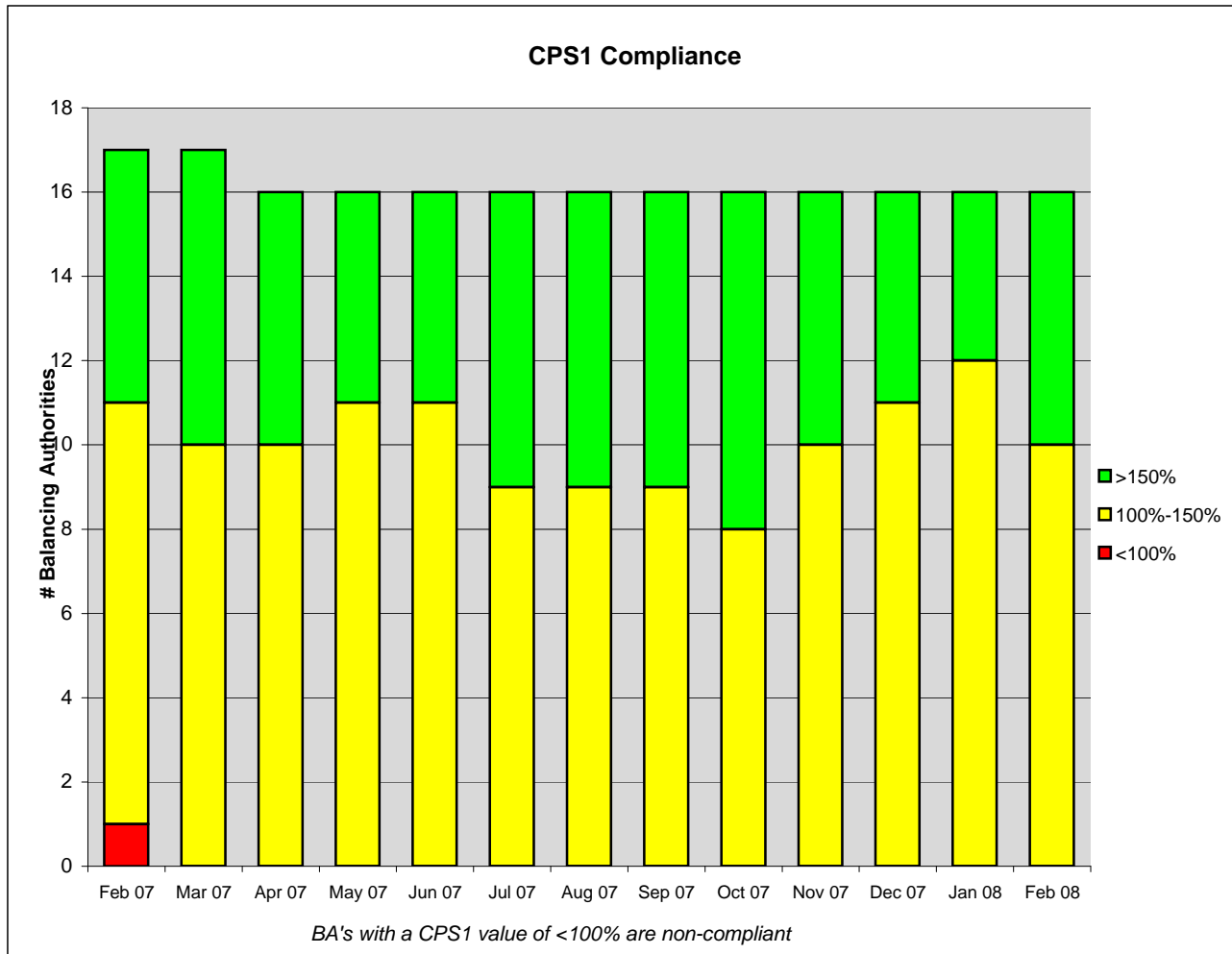
Duration	Feb 07	Mar 07	Apr 07	May 07	Jun 07	Jul 07	Aug 07	Sep 07	Oct 07	Nov 07	Dec 07	Jan 08	Feb 08
< 5 mins	137	100	89	79	221	230	243	247	289	298	190	76	29
<20 mins	114	83	110	86	172	228	182	258	239	191	160	60	56
<30 mins	31	19	28	25	52	42	44	60	47	45	37	10	11
>30 mins	57	26	93	54	78	146	105	125	129	63	62	31	12

	Feb 07	Mar 07	Apr 07	May 07	Jun 07	Jul 07	Aug 07	Sep 07	Oct 07	Nov 07	Dec 07	Jan 08	Feb 08
Total Mins	1695	1140	1600	1220	2615	3230	2870	3450	3520	2985	2245	885	540
(Mins<5)/(Mins>5)	1.47	1.28	2.60	2.09	1.37	1.81	1.36	1.79	1.44	1.00	1.36	1.33	2.72
Longest Event	405	295	755	350	495	410	615	590	945	460	670	142	180
MWh curtailed	1568	1111											
# Events	339	228	320	244	523	646	574	690	704	597	449	177	108

Note 1: Temporary flowgates are excluded from the results.



## 2. Regional Control Performance

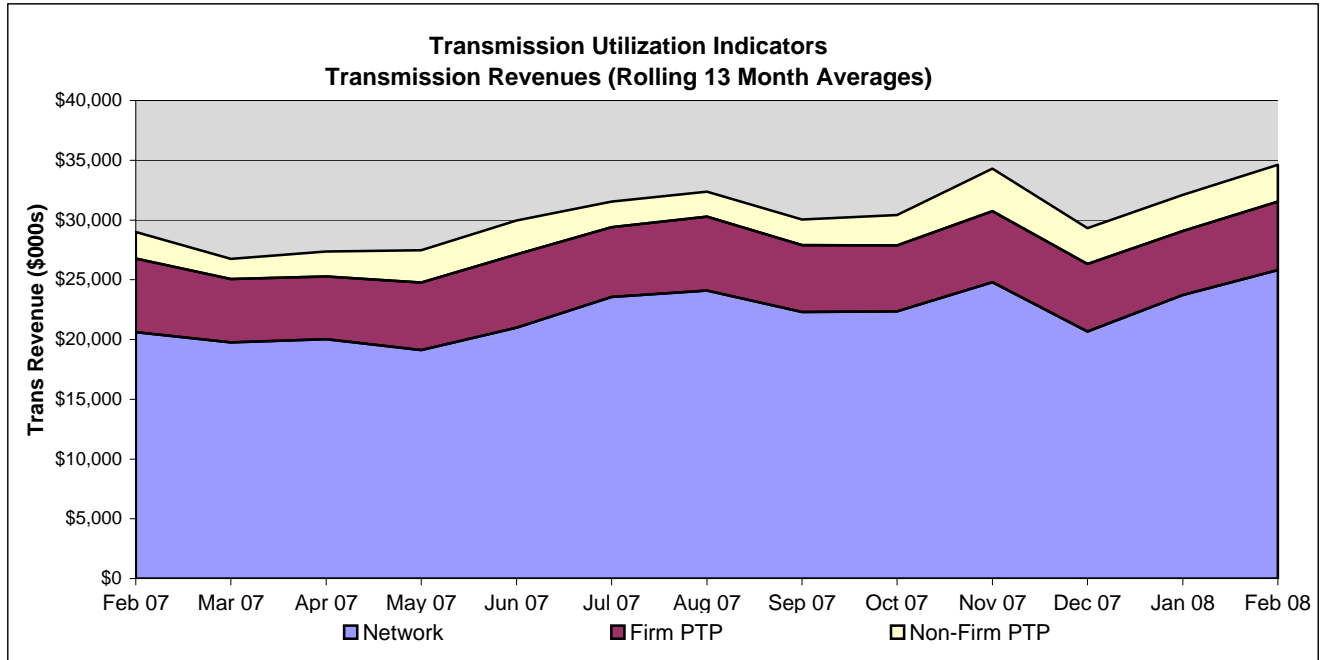


CPS1	Feb 07	Mar 07	Apr 07	May 07	Jun 07	Jul 07	Aug 07	Sep 07	Oct 07	Nov 07	Dec 07	Jan 08	Feb 08
>150%	6	7	6	5	5	7	7	7	8	6	5	4	6
100%-150%	10	10	10	11	11	9	9	9	8	10	11	12	10
<100%	1	0	0	0	0	0	0	0	0	0	0	0	0

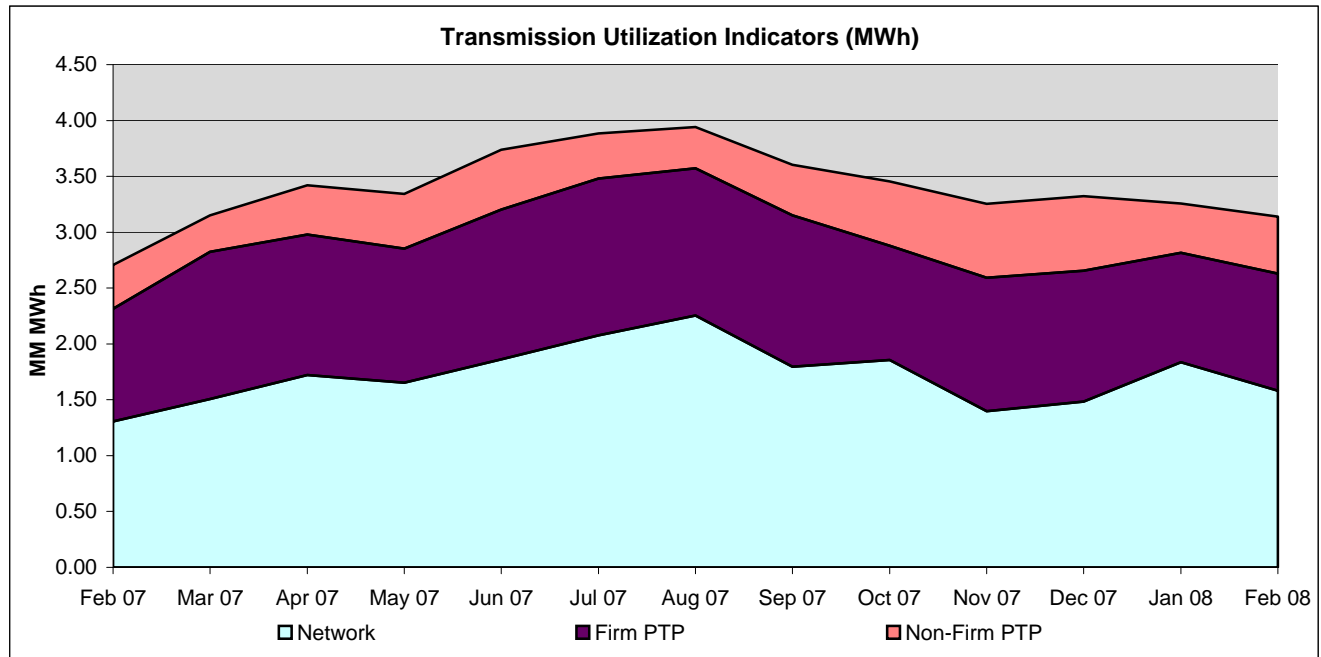
Violation if any 1 Balancing Authority has a violation in a 12 month period.



### 3. Transmission Utilization Proxy

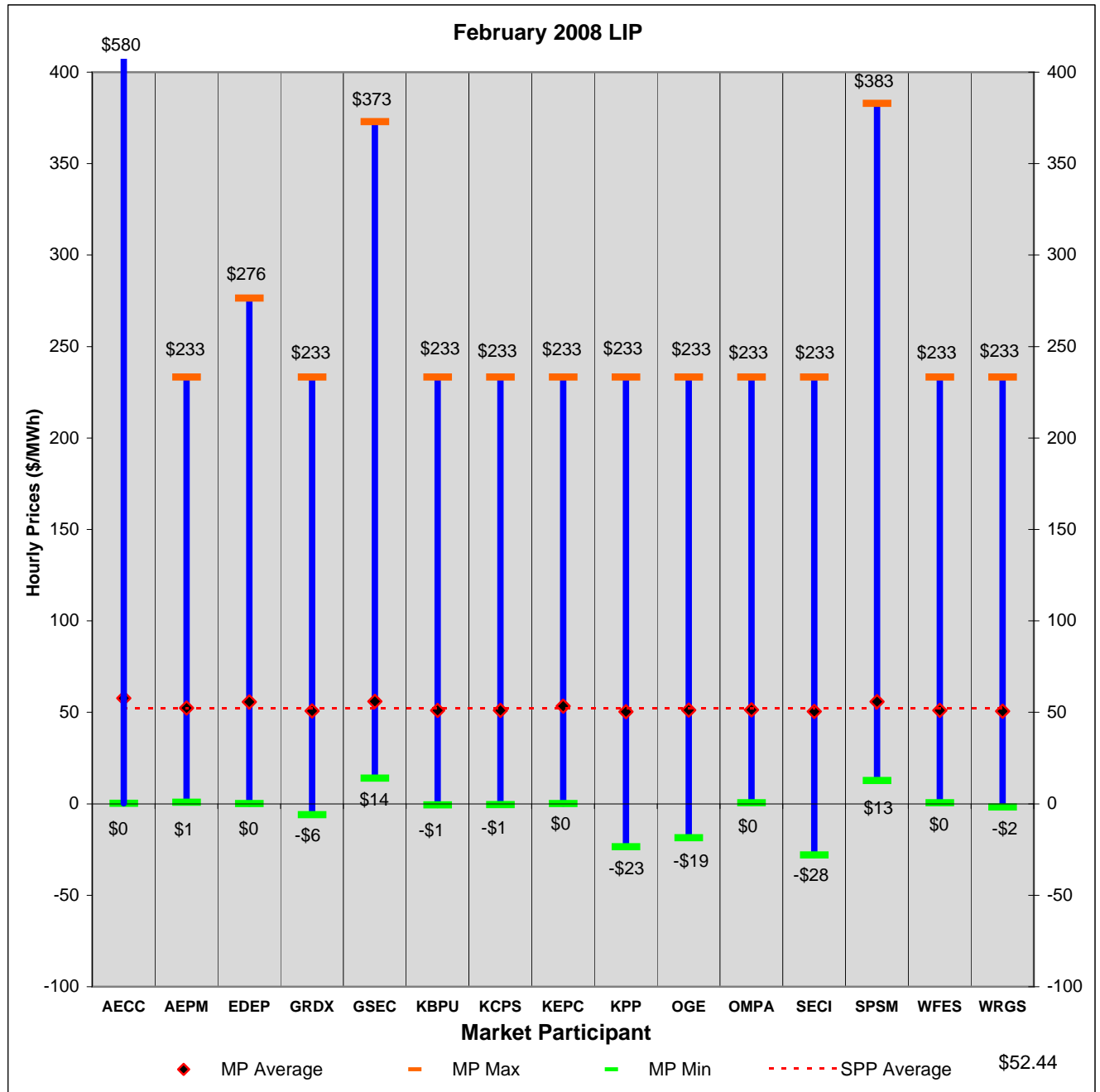


Type	Feb 07	Mar 07	Apr 07	May 07	Jun 07	Jul 07	Aug 07	Sep 07	Oct 07	Nov 07	Dec 07	Jan 08	Feb 08
Network (\$000)	\$20,617	\$19,761	\$20,033	\$19,112	\$20,991	\$23,554	\$24,094	\$22,308	\$22,356	\$24,798	\$20,672	\$23,732	\$25,798
Firm PTP (\$000)	\$6,159	\$5,286	\$5,254	\$5,643	\$6,127	\$5,841	\$6,192	\$5,589	\$5,509	\$5,951	\$5,657	\$5,357	\$5,752
Non-Firm PTP (\$000)	\$2,216	\$1,710	\$2,089	\$2,705	\$2,839	\$2,157	\$2,081	\$2,142	\$2,557	\$3,539	\$2,996	\$3,007	\$3,055

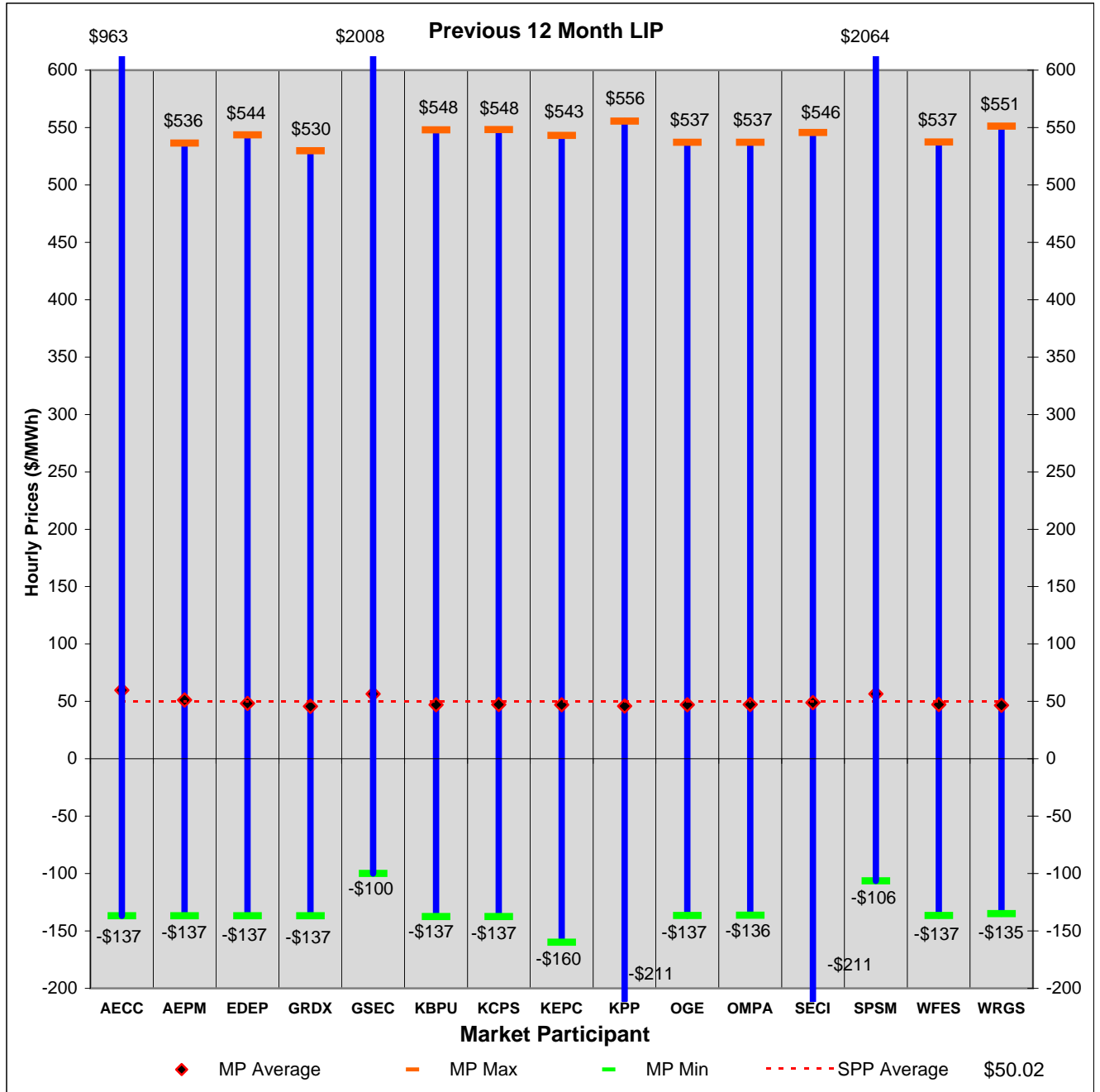


Type	Feb 07	Mar 07	Apr 07	May 07	Jun 07	Jul 07	Aug 07	Sep 07	Oct 07	Nov 07	Dec 07	Jan 08	Feb 08
Network (MM MWh)	1.31	1.51	1.72	1.65	1.86	2.08	2.25	1.80	1.85	1.40	1.48	1.84	1.58
Firm PTP (MM MWh)	1.01	1.32	1.26	1.20	1.34	1.40	1.32	1.35	1.02	1.20	1.17	0.98	1.05
Non-Firm PTP (MM MWh)	0.39	0.33	0.44	0.49	0.54	0.40	0.37	0.45	0.57	0.66	0.67	0.44	0.51
Current Year Total	2.71	3.15	3.42	3.34	3.74	3.88	3.94	3.60	3.45	3.26	3.32	3.26	3.14

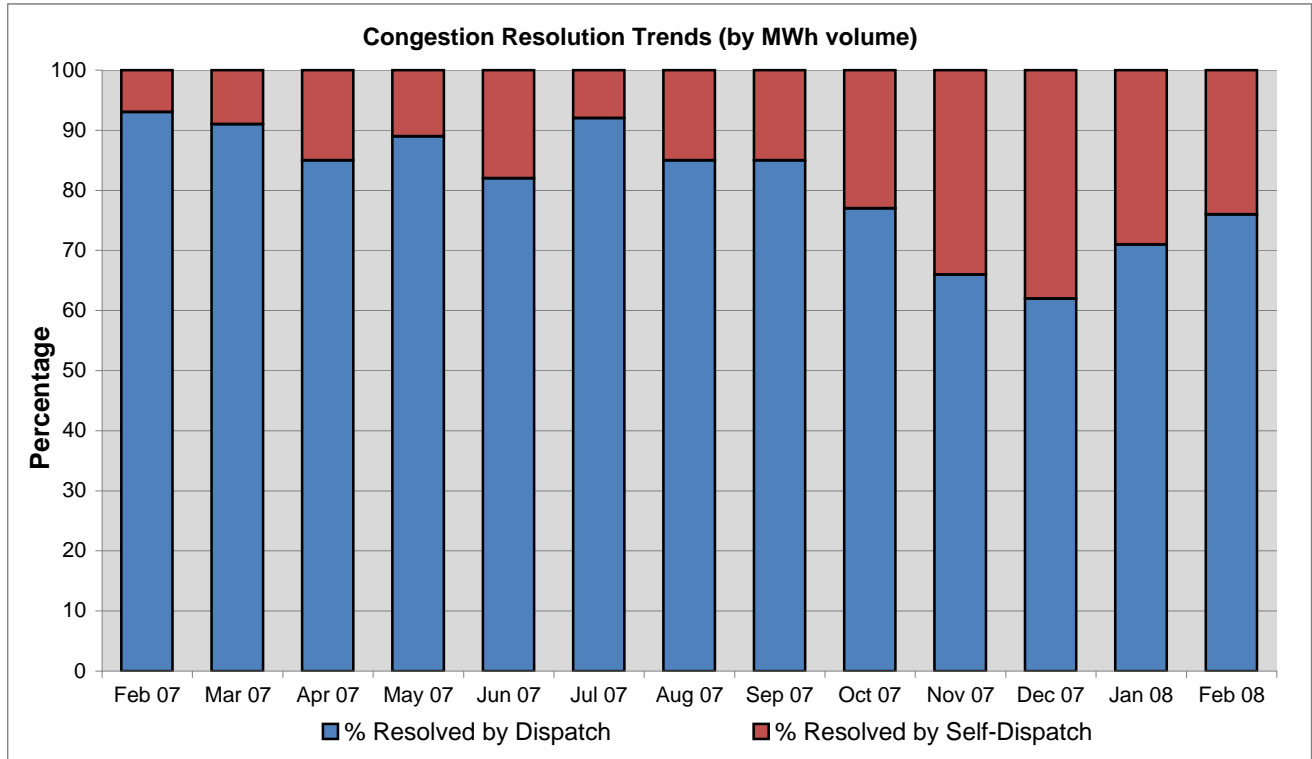
#### 4. EIS Prices and Price Range



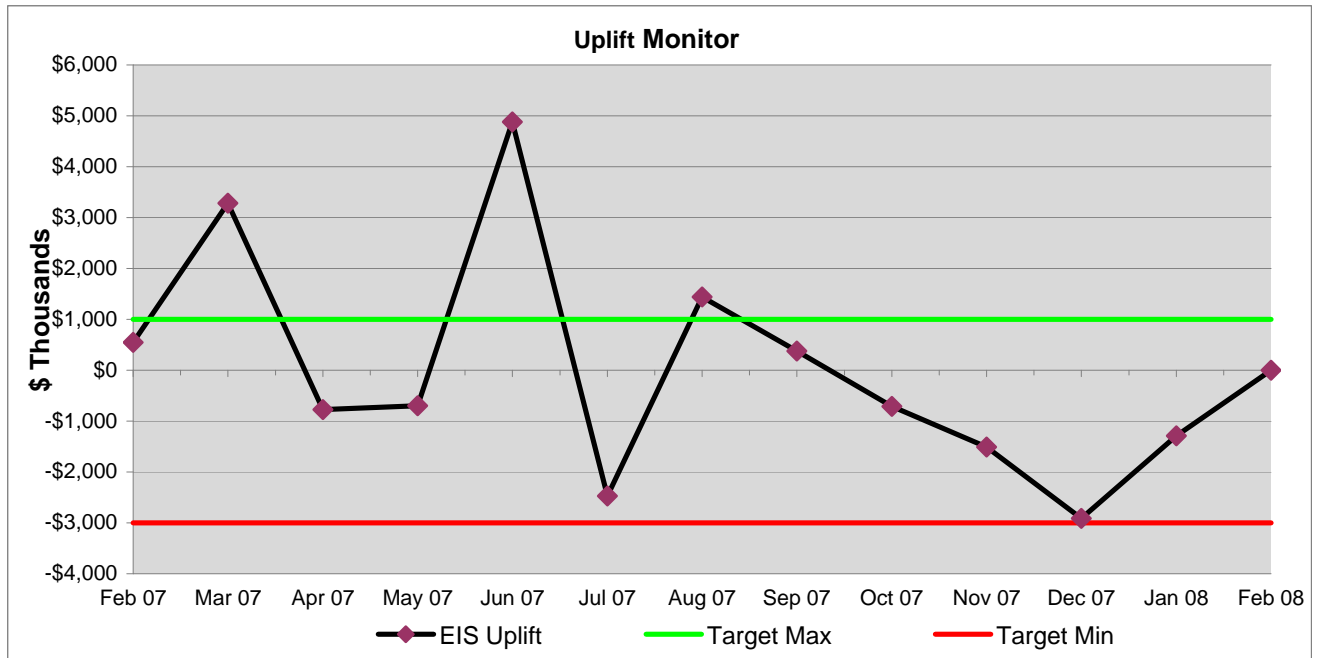
#### 4. EIS Prices and Price Range



### 5. Congestion

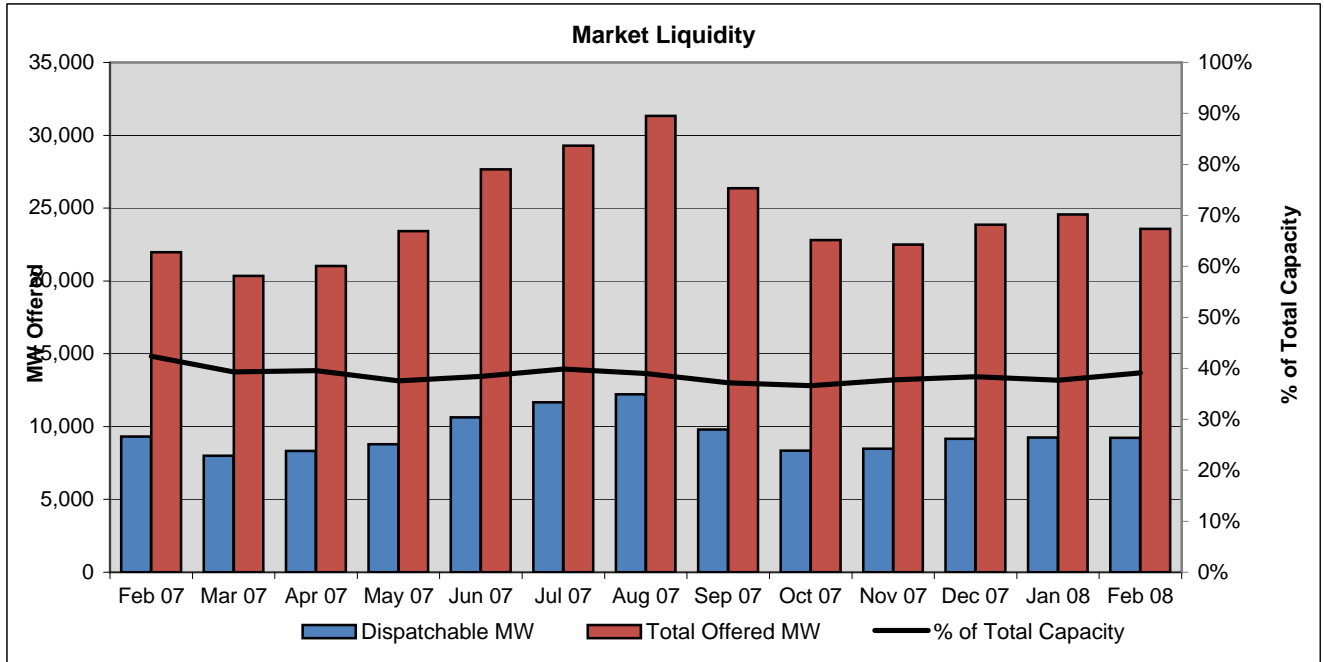


	Feb 07	Mar 07	Apr 07	May 07	Jun 07	Jul 07	Aug 07	Sep 07	Oct 07	Nov 07	Dec 07	Jan 08	Feb 08
% Resolved by Dispatch	93	91	85	89	82	92	85	85	77	66	62	71	76
% Resolved by Self-Dispatch	7	9	15	11	18	8	15	15	23	34	38	29	24

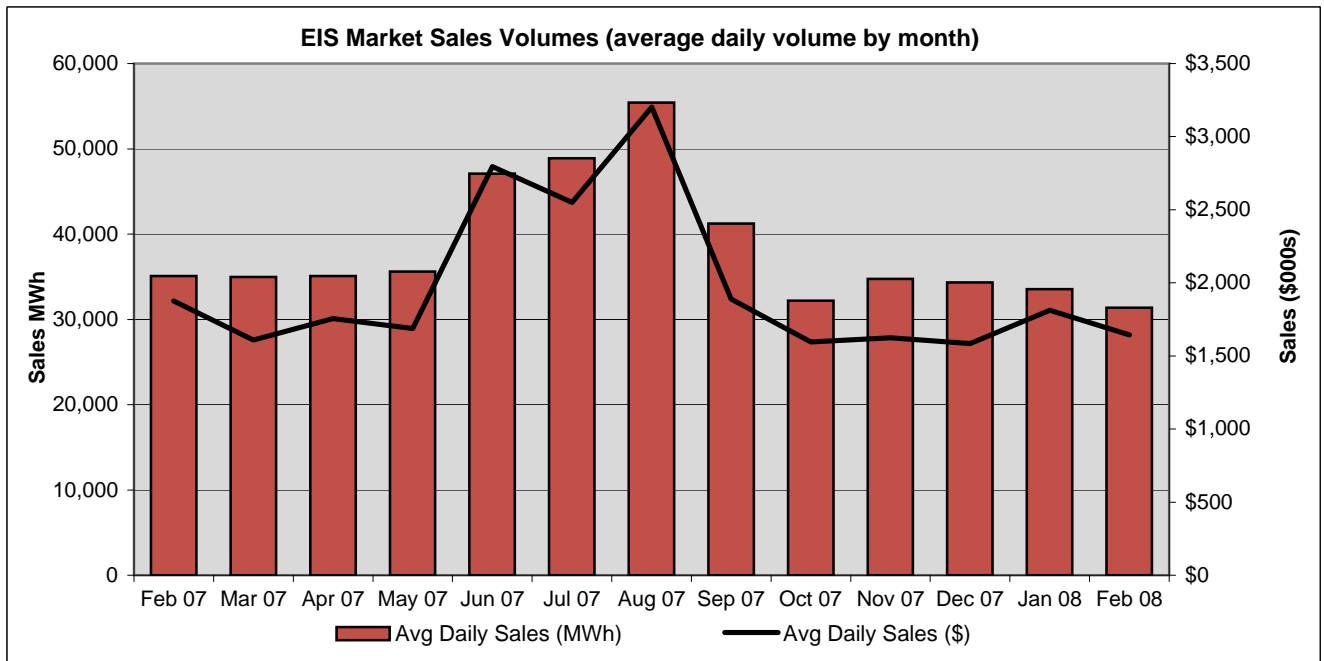


	Feb 07	Mar 07	Apr 07	May 07	Jun 07	Jul 07	Aug 07	Sep 07	Oct 07	Nov 07	Dec 07	Jan 08	Feb 08
EIS Uplift (\$000's)	550	3,282	-775	-695	4,879	-2,475	1,440	377	-709	-1,506	-2,914	-1,289	0

## 6. Market Liquidity

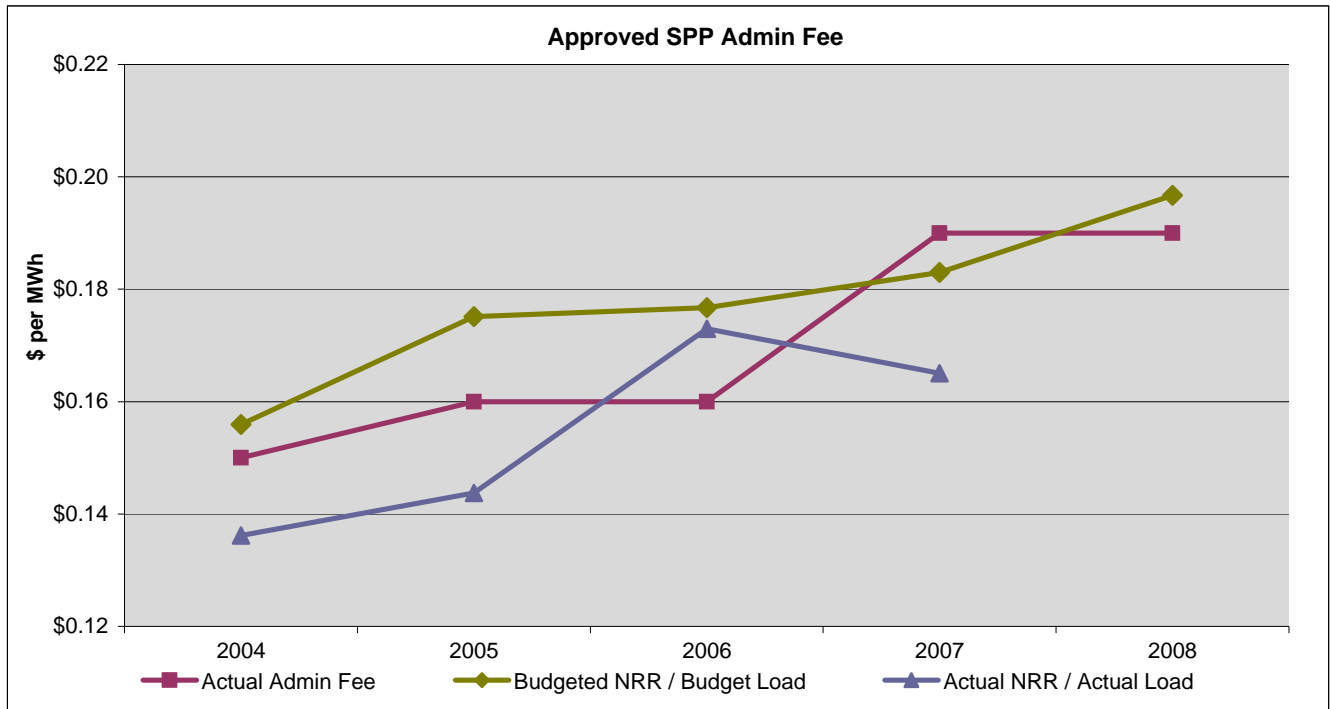


	Feb 07	Mar 07	Apr 07	May 07	Jun 07	Jul 07	Aug 07	Sep 07	Oct 07	Nov 07	Dec 07	Jan 08	Feb 08
Dispatchable MW	9,305	8,002	8,321	8,783	10,631	11,671	12,205	9,802	8,349	8,482	9,151	9,255	9,222
Total Offered MW	21,962	20,353	21,033	23,416	27,657	29,281	31,326	26,375	22,809	22,495	23,864	24,564	23,566
% of Total Capacity	42%	39%	40%	38%	38%	40%	39%	37%	37%	38%	38%	38%	39%



	Feb 07	Mar 07	Apr 07	May 07	Jun 07	Jul 07	Aug 07	Sep 07	Oct 07	Nov 07	Dec 07	Jan 08	Feb 08
Avg Daily Sales (MWh)	35,087	34,989	35,090	35,606	47,105	48,886	55,410	41,230	32,204	34,747	34,325	33,541	31,372
Avg Daily Sales (\$)	1,877	1,608	1,755	1,687	2,795	2,550	3,203	1,889	1,595	1,623	1,585	1,813	1,644

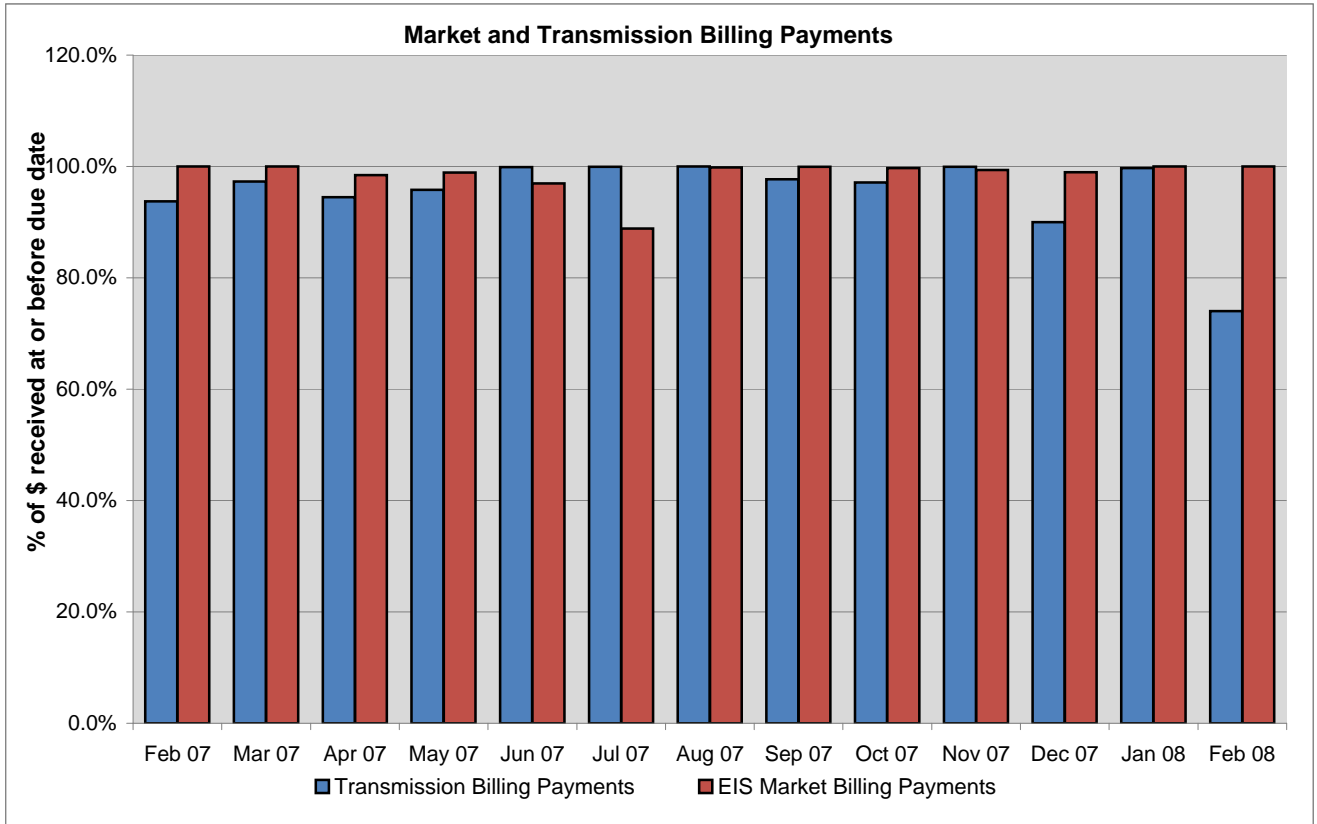
## 7. SPP Admin Fee Performance



Financial Metrics

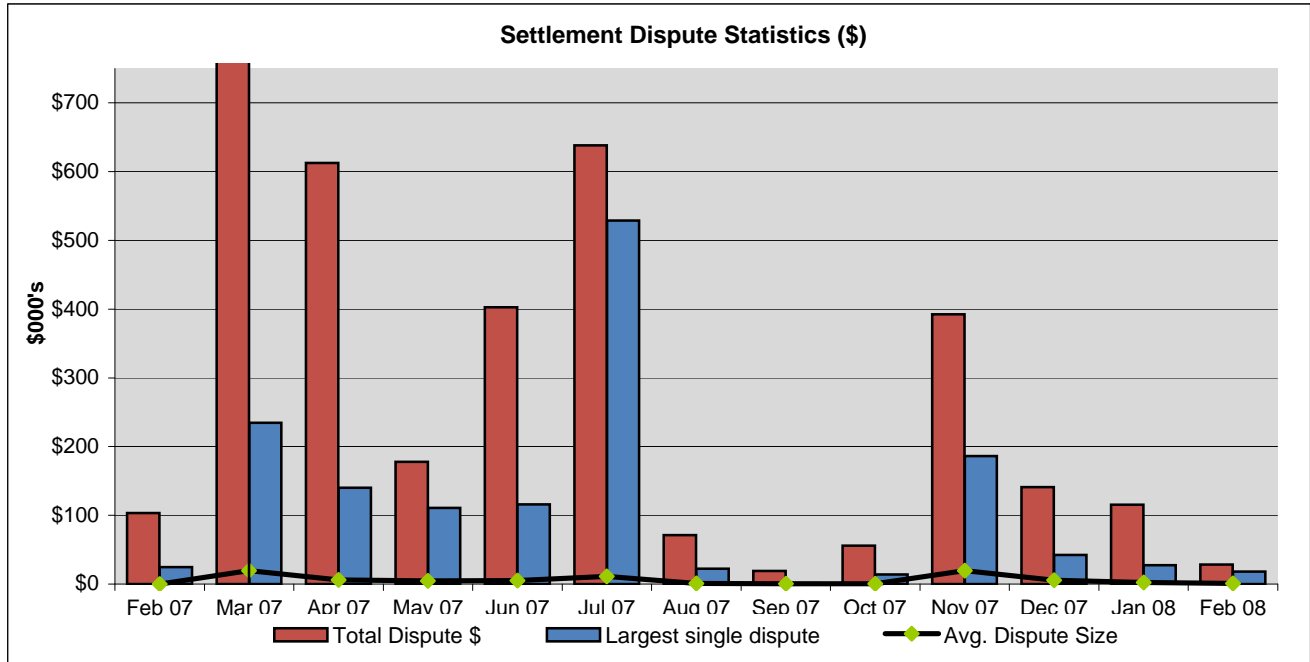
	2004	2005	2006	2007	2008
Budgeted Net Revenue Required (\$000's)	\$ 38,322	\$ 44,391	\$ 45,688	\$ 52,819	\$ 61,462
Budgeted Load (000's)	245,776	253,489	258,556	288,649	312,496
Budgeted NRR / Budget Load	\$ 0.156	\$ 0.175	\$ 0.177	\$ 0.183	\$ 0.197
Actual Admin Fee	0.15	0.16	0.16	0.19	0.19
Actual Net Revenue Required (\$000's)	\$ 33,443	\$ 38,415	\$ 49,549	\$ 49,691	\$ -
Actual Load (000's)	245,571	267,239	286,446	301,053	-
Actual NRR / Actual Load	\$ 0.136	\$ 0.144	\$ 0.173	\$ 0.165	-
EIA-411 Load Growth Forecast	-0.37%	3.05%	-0.60%	1.80%	2.10%
Actual Load Growth	-1.60%	8.82%	7.19%	5.10%	0.00%

## 8. Financial Settlement Index

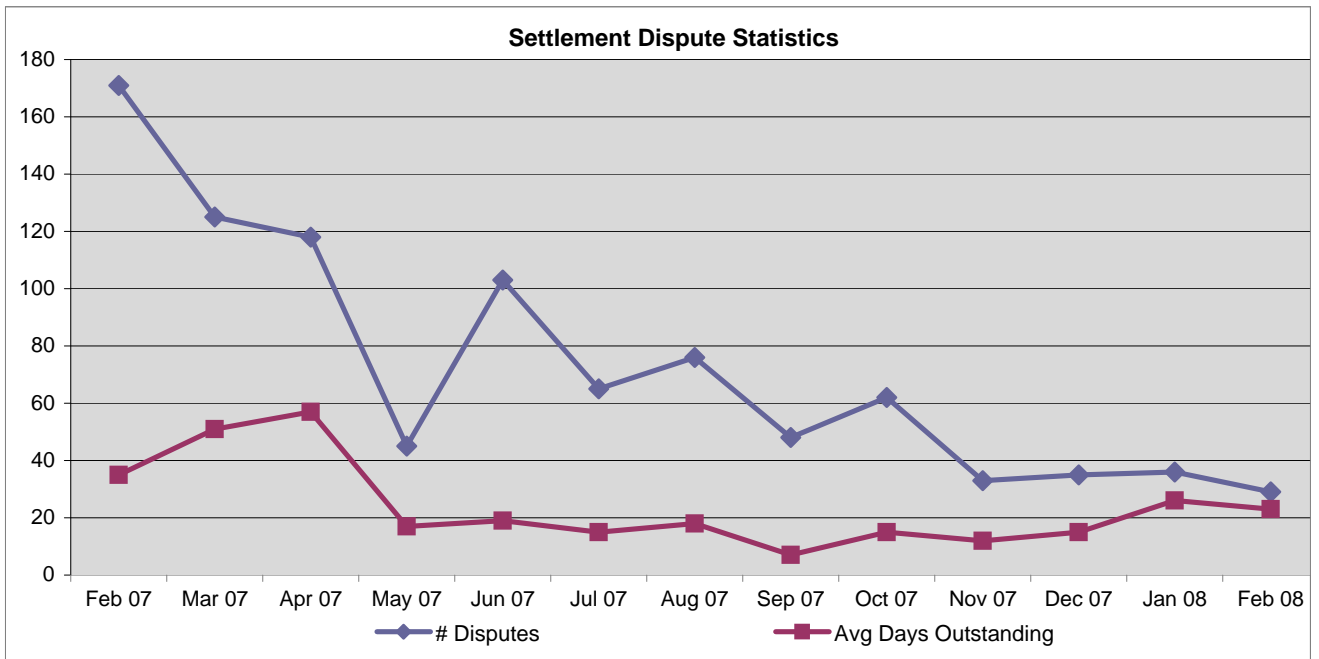


	Feb 07	Mar 07	Apr 07	May 07	Jun 07	Jul 07	Aug 07	Sep 07	Oct 07	Nov 07	Dec 07	Jan 08	Feb 08
% of Transmission Payment \$ Received at or Before the Due Date	93.7%	97.3%	94.5%	95.8%	99.9%	100.0%	100.0%	97.7%	97.1%	99.9%	90.0%	99.7%	74.0%
% of Market Payment \$ Received at or Before the Due Date	100.0%	100.0%	98.4%	98.9%	97.0%	88.8%	99.9%	100.0%	99.7%	99.3%	99.0%	100.0%	100.0%

## 9. Financial Disputes Index



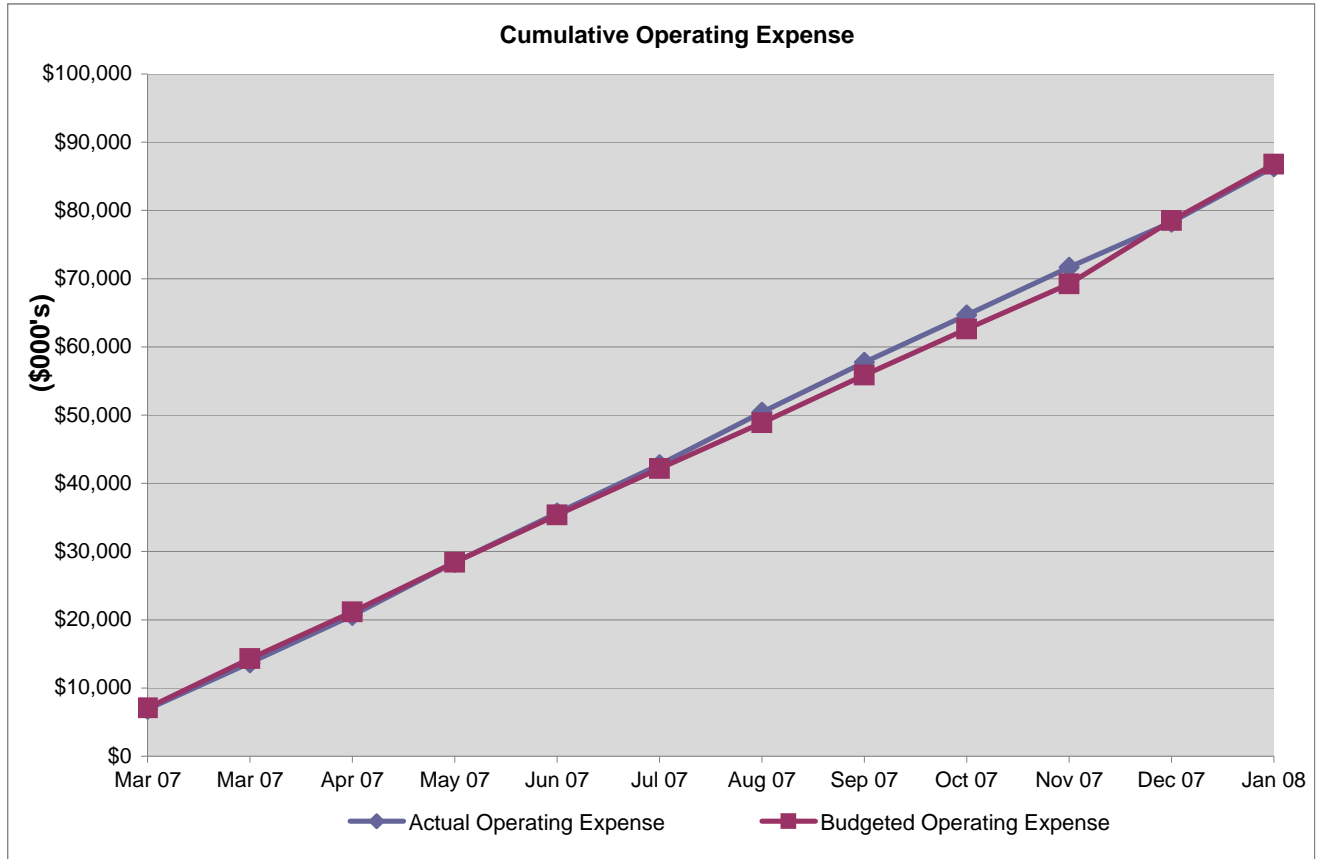
	Feb 07	Mar 07	Apr 07	May 07	Jun 07	Jul 07	Aug 07	Sep 07	Oct 07	Nov 07	Dec 07	Jan 08	Feb 08
Total Dispute \$	\$103,465	\$1,425,981	\$612,799	\$177,856	\$402,518	\$638,390	\$71,230	\$18,998	\$55,690	\$392,435	\$141,221	\$115,278	\$28,597
Avg. Dispute Size	\$169	\$19,534	\$6,008	\$4,560	\$5,095	\$11,007	\$989	\$396	\$679	\$19,622	\$5,432	\$2,452	\$953
Largest single dispute	\$24,642	\$234,638	\$140,054	\$110,948	\$116,061	\$528,931	\$22,384	\$1,315	\$14,073	\$186,040	\$42,497	\$27,572	\$18,038



	Feb 07	Mar 07	Apr 07	May 07	Jun 07	Jul 07	Aug 07	Sep 07	Oct 07	Nov 07	Dec 07	Jan 08	Feb 08
# Disputes	171	125	118	45	103	65	76	48	62	33	35	36	29
Avg Days Outstanding	35	51	57	17	19	15	18	7	15	12	15	26	23

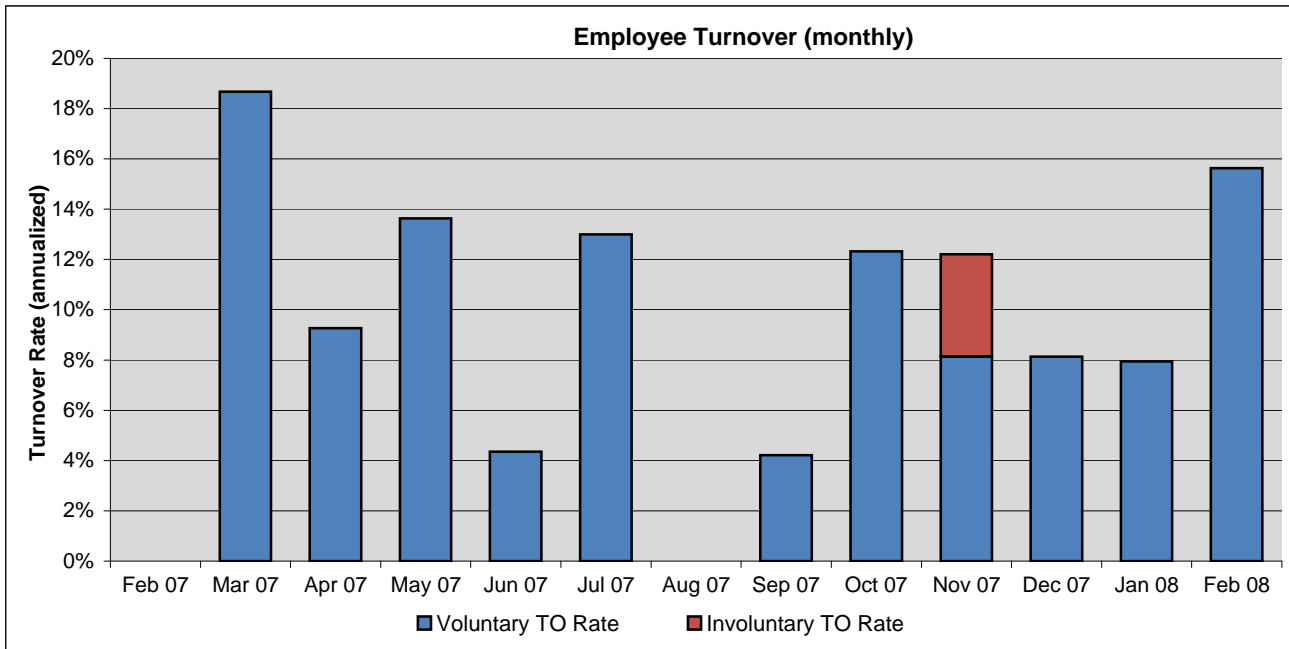
## 10. Budget Performance Monitor

Financial Metrics



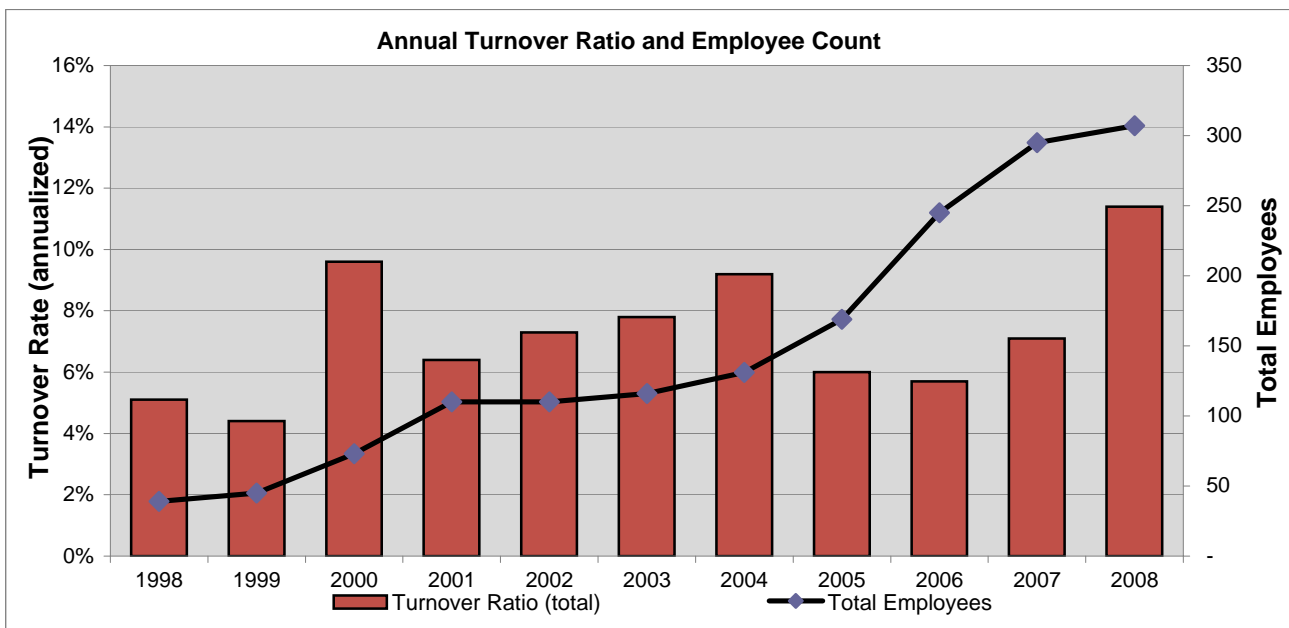
<b>Cumulative</b>	<b>Mar 07</b>	<b>Mar 07</b>	<b>Apr 07</b>	<b>May 07</b>	<b>Jun 07</b>	<b>Jul 07</b>	<b>Aug 07</b>	<b>Sep 07</b>	<b>Oct 07</b>	<b>Nov 07</b>	<b>Dec 07</b>	<b>Jan 08</b>
Actual Operating Expense (\$000's)	6,873	13,709	20,644	28,420	35,630	42,753	50,444	57,743	64,699	71,677	78,302	86,399
Budgeted Operating Expense (\$000's)	7,074	14,291	21,139	28,437	35,369	42,156	48,879	55,885	62,628	69,233	78,511	86,778
Variance: Fav / (Unf)	201	581	494	16	(261)	(597)	(1,565)	(1,858)	(2,071)	(2,444)	209	379
% of Variance	3%	4%	2%	0%	-1%	-1%	-3%	-3%	-3%	-4%	0%	0%

### 11. Employee Turnover



	Feb 07	Mar 07	Apr 07	May 07	Jun 07	Jul 07	Aug 07	Sep 07	Oct 07	Nov 07	Dec 07	Jan 08	Feb 08
Voluntary TO Rate	0.00%	18.68%	9.27%	13.64%	4.35%	13.00%	0.00%	4.21%	12.33%	8.14%	8.14%	7.95%	15.64%
Involuntary TO Rate	0.00%	0.00%	0.00%	0.00%	0.00%	0.00%	0.00%	0.00%	0.00%	4.07%	0.00%	0.00%	0.00%
Total Turnover (# of employees)	0	4	2	3	1	3	0	1	3	3	2	2	4

Note: Involuntary termination in November was due to an employee death (not work-related).



	1998	1999	2000	2001	2002	2003	2004	2005	2006	2007	2008
Total Employees	39	45	73	110	110	116	131	169	245	295	307
Turnover Ratio (total)	5.1%	4.4%	9.6%	6.4%	7.3%	7.8%	9.2%	6.0%	5.7%	7.1%	11.4%

\*2008 figures are as of the end of the reported month

### 12. SPP Compliance with NERC Standards

#### SPP RTO Compliance

	Feb 07	Mar 07	Apr 07	May 07	Jun 07	Jul 07	Aug 07	Sep 07	Oct 07	Nov 07	Dec 07	Jan 08	Feb 08
# Confirmed Violations					0	0	0	0	0	0	0	0	0

*Note: Enforcable compliance program began in June 2007*

# Southwest Power Pool Metrics Definitions

Transmission & Market Indicators	<b>Summary of Regional Operational Performance Indicators</b>	
	<p>Two groups of metrics will be monitored to provide an overall health indication of the regional transmission system and market. There are two primary areas of interest:</p> <ul style="list-style-type: none"> <li>• Reliability Performance Indicators, which focus on the actual operations of the transmission system and whether or not it was operated within expected limits and standards.</li> <li>• Market Performance Indicators, which focus on the performance of the market in terms of overall volume, prices and level of participation.</li> </ul> <p>The intent is to monitor the trends in these areas over time to identify any unexpected performance in an area. Specific performance targets may be established in the future as experience is gained with the information.</p>	
	<p><b>Purpose of Reliability Performance Indicators</b></p> <p>This sub-group of metrics is designed to measure the operations of the transmission system from a reliability perspective in the prior 12 month period. Together, they form an aggregate representation to answer the following questions:</p> <ul style="list-style-type: none"> <li>• Were any operating limits violated in the period and if so, how severe was the situation? (see Active Transmission Control Indicators)</li> <li>• Was the system operated in compliance with the relevant control performance standards? (see Regional Control Performance)</li> </ul>	
<p><b>1. Active Transmission Control Indicators</b></p>	<p>Provides a set of measures on the number of minutes control actions are taken to reduce the flow on one or more facilities below its System Operating Limit (SOL) or IROL limit. For each month, the following items are reported:</p> <ul style="list-style-type: none"> <li>• Total minutes in period – is the total minutes in the month control actions were required.</li> <li>• Ratio of Short/Longer Duration events – is the ratio of the total number of minutes where the event duration was less than 5 minutes to the total number of minutes where the event duration was greater than 5 minutes.</li> <li>• Duration of longest event – is the maximum number of minutes for an event in the month.</li> <li>• Total number of events in the period             <ul style="list-style-type: none"> <li>- Normal operations (green) – The event was managed in less than 5 minutes.</li> <li>- High control activity required (yellow/orange) – the event took more than 5 minutes but less than 20 minutes (yellow) or less than 30 minutes (orange) to control, however, no IROL violations occurred.</li> <li>- Significant event occurrence (red) – control actions were required to eliminate one or more IROL violations in the month.</li> </ul> </li> </ul>	

## 2. Regional Control Performance

Measures the aggregate performance to the NERC CPS (Control Performance Standards) of the Balancing Authorities in the region. This indicator is set based on the number of BAs within region that are in compliance with the NERC real time control performance standards (known as BAL-001 – Real Power Balancing Control Performance and BAL-002 – Disturbance Control Performance).

- CPS1 requires BAs to be in compliance for 100% of the periods measured within the month; and CPS2 requires BAs to be in compliance for 90% of the periods measured within the month.
- For the CPS1 standard, each BA's rolling 12 month performance is grouped into one of three performance bands (<100% [red], 100-150% [yellow], >150% [green]).
- The number of BA's whose CPS1 score falls into these bands is shown; with below 100% meaning non-compliant with the standard.
- CPS2 performance is depicted in the appropriate bands (<90% [red], 90-95% [yellow], >95% [green]) based on the monthly CPS2 score rather than a rolling 12 month average.

### ***Purpose of Market Performance Indicators***

This sub-group of indicators provides a view of the effectiveness of the EIS market in the context of answering the following questions:

- What was the value of transmission services used in the month? (see Transmission Utilization Proxy)
- What was the average wholesale price paid in the region and what was its volatility? (see Price and Price Range)
- How much of the total congestion could be resolved through market mechanisms? (see Congestion Resolved by Market)
- What was the level of available generation offered to the market and EIS related energy sales in the month? (see Market Liquidity)

## 3. Transmission Utilization Proxy

Measures the volume of transmission service scheduled in the month in terms of the transmission service revenues paid by both Network Customers and Point-to-Point customers.

- The revenues paid by transmission customers are directly related to the amount of transactions scheduled on the transmission system and therefore provide a proxy as to the utilization of the transmission system in the period.
- The figure reported will be a simple sum of the transmission service revenues paid for Network Service, Firm Point-to-Point, and Non-Firm Point-to-Point transmission service.
- Figures will be reported on a rolling thirteen month basis to allow comparison to prior seasons and similar months.

## 4. Price and Price Ranges

Shows the EIS market prices for each market participant within the footprint on both a 12-month rolling average and for the previous month. It provides a summary of the average, high and low prices in each period.

## 5. Congestion Resolution & Uplift Measures

Measures the % of MWh of the total congestion MWh resolved by the EIS Market. The objective is to monitor how often market mechanisms versus non-market mechanisms are able to resolve congestion on the system.

- For comparison, the total EIS Uplift dollar amount is included.
- Although no specific performance targets are being set at this time, the intent is to monitor the trend of this index to identify significant deviations from average.

<b>Transmission &amp; Market Indicators</b>	<b>6. Market Liquidity</b>	<p>Measures the average daily MW capacity offered to the EIS market (dispatchable generation); presented as a percent of daily average capacity available in the hour.</p> <ul style="list-style-type: none"> <li>Data was taken from the Resource Plans.</li> <li>Average daily MWh sales into the EIS Market and their dollar value are shown as well.</li> <li>Although no specific performance targets are being set at this time, the intent is to monitor the trend of this index to identify significant deviations from average.</li> </ul>
---	----------------------------	---

<b>Financial Metrics</b>	<b>Purpose of Financial Metrics</b>	
	This group of metrics provides a view of the organization's overall financial situation in terms of both the operating costs and settlement functions carried out.	
	<b>7. SPP Admin Fee Performance (Rolling)</b>	Measures actual costs incurred by SPP on an annual basis and compares this to the approved Admin Fee and Budgeted Net Revenue Requirement (NRR).
	<b>8. Financial Settlement Index</b>	Metric measures the timeliness of the financial settlements for both transmission billing and EIS market billing and provides a proxy for the strength of the organization's cash flow.
	<b>9. Financial Disputes Index</b>	<p>Measures the number and value of disputes made with regards to the financial settlements of the markets. The objective in this area is twofold: (1) minimize the time to clear disputes; and (2) minimize the total value of dollars in dispute. The monthly indicators are the following three variables:</p> <p style="margin-left: 40px;">Total number of disputes Total dollars in dispute Average # days to resolve disputes</p>
<b>10. Budget Performance Monitor</b>	Measures the total actual operating expenses against the total budgeted operating expenses across the organization.	

<b>Learning &amp; Growth</b>	<b>Purpose of Learning &amp; Growth Metrics</b>	
	These indicators provide insights to the organization's success in maintaining and supporting its desired staffing levels and employee growth plans.	
<b>11. Overall Turnover</b>	Measures both involuntary and voluntary turnover rates in the organization. Monthly turnover is charted on a rolling 12 month basis, while annual turnover ratio and number of employees is provided for historical purposes.	

<b>Performance</b>	<b>Purpose of Performance Metrics</b>	
	This Performance Metrics are divided into two categories, quarterly and annual, which describe the frequency with which they will be monitored. The metrics in this group focus on compliance and achievement of major initiatives. Only the NERC Compliance metric is reported as part of the Metrics Report document. The other measures in this category will be reported on a periodic basis in separate reports.	
<b>12. NERC Compliance</b>	Measures SPP's compliance with all NERC standards. Status is green unless there is a self-reported violation of any criteria during the period. This metric excludes the control performance standards which are included in the Regional Control Performance metric.	