



**Helping our members work together
to keep the lights on...
today & in the future**



SPP Mission

**Helping our members work together to
keep the lights on – today and in the
future.**



What are Priority Projects?

Priority Projects are classified as near-term opportunities that should be captured while the SPP is transitioning to the Integrated Transmission Planning (ITP) process.

What are Priority Projects?

Priority Projects are “low hanging fruit” that should be captured through the Priority Project process development.

Screening Criteria for Priority Projects:

- **Congestion Corridors**
- **Transmission Service Requests**
- **GI Corridors**
- **Economic Projects**
- **West – East Transfer Capability**

Screening development

Criteria	5 points	4 points	3 points	2 points	1 point
Congestion Relief (C)	\$170K - \$100K	\$99K - \$50K	\$49K - \$20K	\$19 - \$8K	\$7K - \$0K
TSR Impact (T)	300 – 100 MWI value	99 – 50 MWI value	49 – 19 MWI value	18 – 10 MWI value	9 – 0 MWI value
GI Impact (G)	1600 – 1300 MWI value	1299 – 1000 MWI value	999 – 700 MWI value	699 – 400 MWI value	399 – 0 MWI value
Economic Benefit (E)	Above 1.2	1.19 – 0.9	0.89 – 0.65	0.64 – 0.4	0.39 - 0
West - East Transfer (W)	765kV	500kV	345kV	230kV	Under 230kV

Screening development

- **Congestion Relief (C)** -The congestion relief was calculated by multiplying the average hourly shadow price as provided by the SPP markets group by the total number of intervals (5 minutes) breached or binding for an affected flowgate.

Where **C** equals: Average Shadow Price x number of intervals violated = **C**
(the assigned dollar value)

Shadow Price				Congestion Relief
S1	x	# of intervals violated	=	C1
S2	x	# of intervals violated	=	C2
S3	x	# of intervals violated	=	C3

Screening development

- **TSR Impact (T)** - The TSR impact value was calculated by taking reservation Transfer Distribution Factors (TDFs) and multiplying by the Mega Watts requested to obtain a total Mega Watt Impact (MWI) value from the last five aggregate studies. MWI values for each reservation were then summed together to get a total.

((R1: $TDF_1 \times MW_1 = MWI_1$), (R2: $TDF_2 \times MW_2 = MWI_2$), etc ($MWI_1 + MWI_2 = \text{Total}$))

Screening development

- **GI Impact (G)** - The GI impact value was calculated as the sum of all positive incremental flow impacts on such upgrades. ($PTDF \times MW_{\text{requested}} = \text{GI Impact}$)
- **Economic Benefit (E)** – Transmission construction provides local economic development and job creation benefits. This benefit will tend to reside in the state where each project will be constructed.
- **West – East Transfer (W)** – Each project received a value based on the kV level of the proposed solution that improved power transfers between West and East regions of SPP.

Metrics to be considered for further consideration:

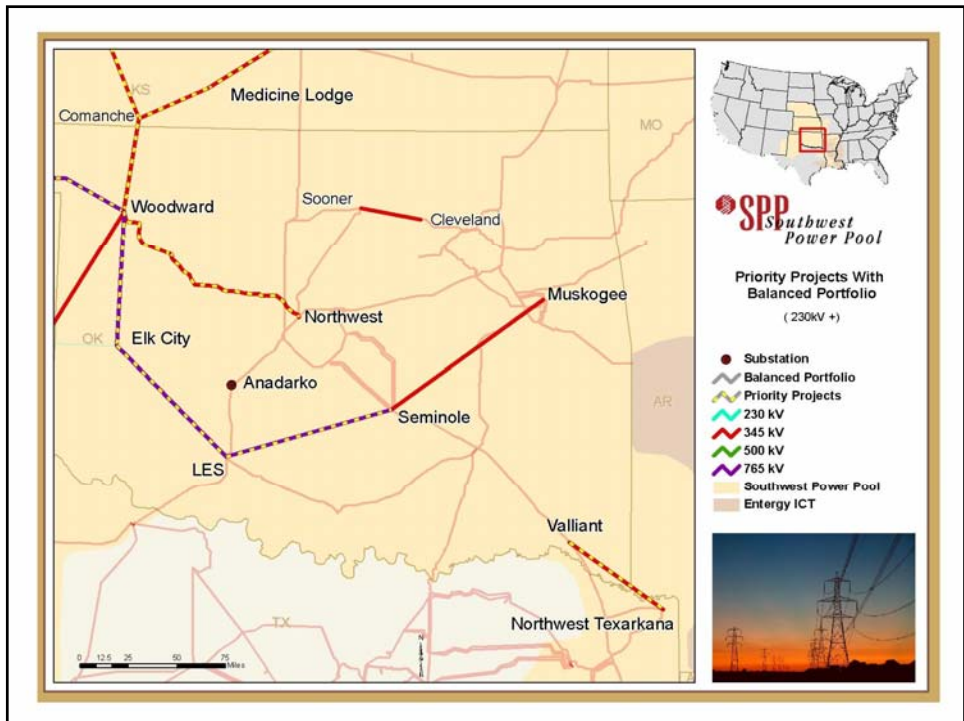
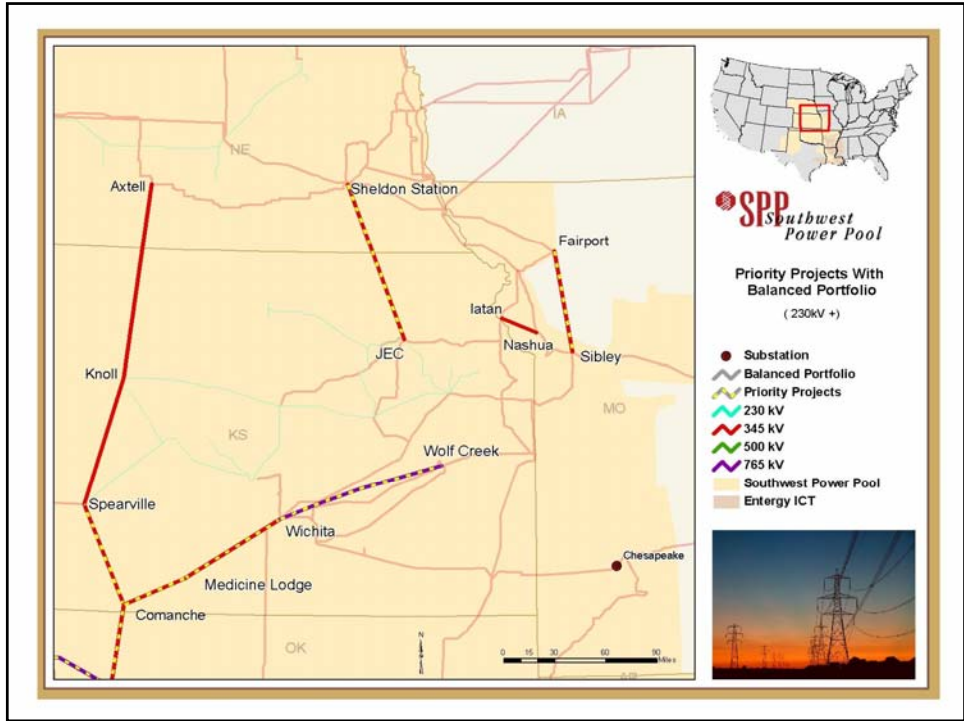
- **Adjusted Production Cost (APC)**
- **Impact on Losses**
- **Environmental Impacts**
- **Reliability Impact**
- **Deliverability of Capacity and Energy to Load**

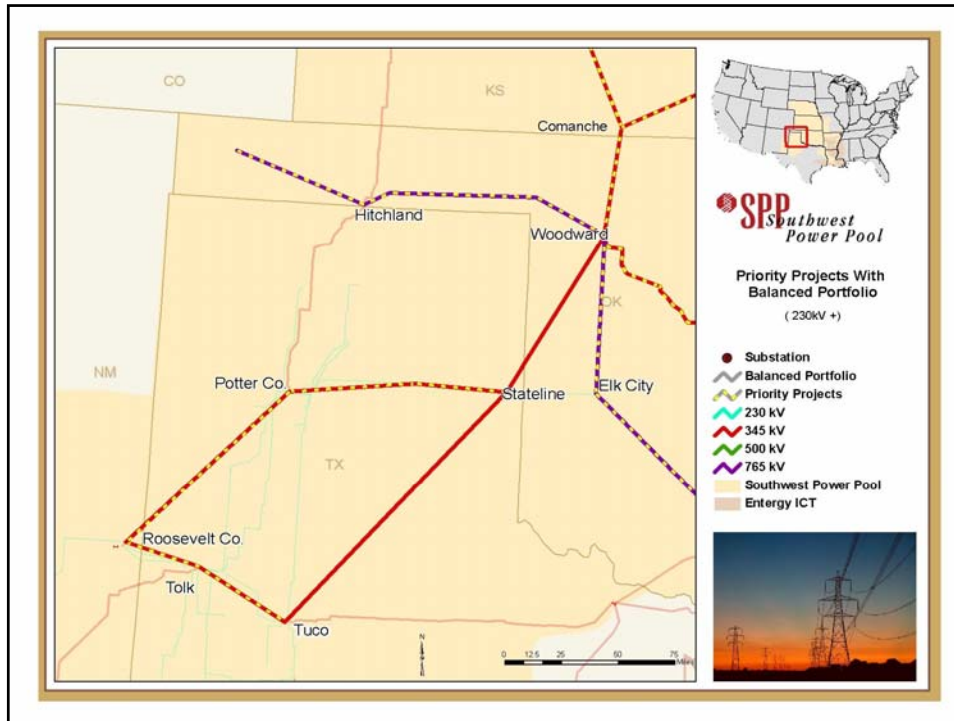
Priority Projects Screened List

- Hitchland 345kV – Woodward 345kV
- Spearville 765kV– Comanche 765kV–
Medicine Lodge 765kV– Wichita 765kV
- Comanche 345kV– Woodward 345kV
- Woodward 765kV– Elk City West 765kV
- Potter 345kV – Grapevine 345kV – Beckham 345kV
- Tatonga 345kV– Northwest #2 345kV
- Woodward 345kV– Tatonga #2 345kV
- Fairport 345kV– Sibley 345kV
- Potter 345kV– Mid-Point reactor station on the
Tuco 345kV – Woodward 345 kV
- Sunnyside 345kV – LES 345kV
- Valliant 345kV – Texarkana 345kV

Priority Projects Screened List

- Extension of the already approved Woodward/Mooreland
765kV – Hitchland 765kV line for 40 miles to Cimarron
County, Oklahoma
- Elk City West 765kV – LES 765kV
- LES 765kV– Seminole 765kV
- Northwest Wichita 765kV – Wolf Creek 765kV
- Roosevelt 345kV – Tolk 345kV – Tuco 345kV
- Potter 345kV– Roosevelt 345kV (similar to Tolk-Potter)
- Chesapeake Tap & Transformer (345kV/161kV)
- Riverside Station 138kV– Tulsa Power Station (Rebuild)
138kV
- Jeffrey (KS) 345kV – Sheldon (NEB) 345kV line





SOUTHWEST POWER POOL

Priority Project Schedule

MOPC review of recommended draft list	1 day	7/14/2009 8:00	7/14/2009
MOPC member comment period	5 days	7/15/2009 8:00	7/21/2009
Staff analysis and update list based on comments	10 days	7/22/2009 8:00	8/25/2009
BOD/RSC Update	1 day	7/28/2009 8:00	7/28/2009
Member review/comment period	10 days	8/26/2009 8:00	9/8/2009
Update recommended project list	16 days	9/9/2009 8:00	9/30/2009
Final review and Approval Process - MOPC/BOD/RSC	21 days	10/1/2009 8:00	10/29/2009
Publish final document to SPP MOPC meeting materials	1 day	10/1/2009 8:00	10/1/2009
MOPC review and approval of project list	0 days	10/13/2009 8:00	10/13/2009
Publish final document for BOD/RSC meeting	1 day	10/13/2009 8:00	10/13/2009
Present final list for approval to BOD/RSC	0 days	10/29/2009 17:00	10/29/2009

SPP.ORG 16

How is the Priority Project list finalized?

- **Extensive analysis is performed on these projects**
- **Projects with a Benefit to Cost analysis that is > 1 will be recommended**

Conclusion

- **A systematic approach to prioritizing projects**
- **Includes Stakeholder involvement and review**
- **Submission to the BOD the finalized list of Priority Projects for approval**
- **Work with Stakeholders to help facilitate implementation of these projects**



Katherine Prewitt
Manager, ITO
501-614-3518
kprewitt@spp.org