



75

SEVENTY-FIVE YEARS OF
RELIABILITY THROUGH RELATIONSHIPS



Evaluation of Multi-Day Assessments

Temper Williams and Sam Ellis

Request

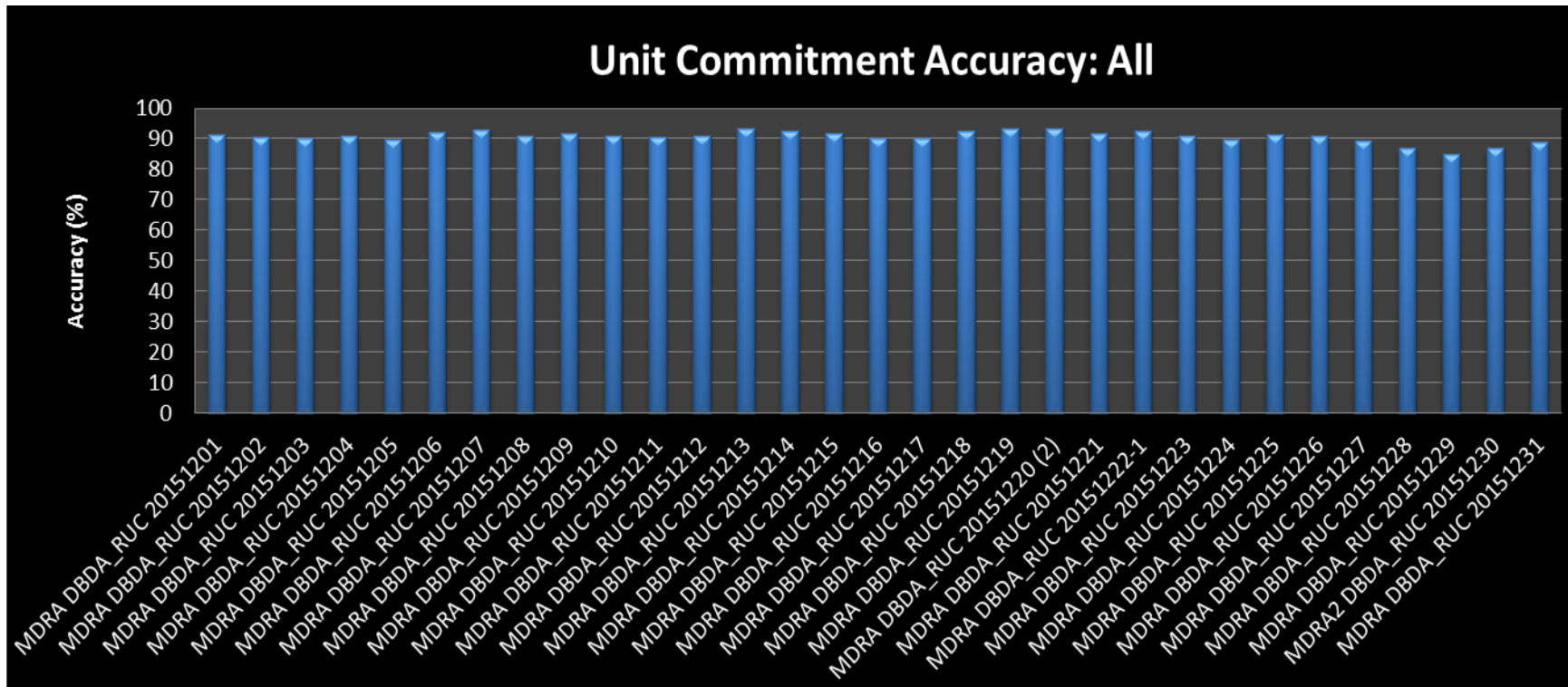
- SPP to provide analysis that assists Market Participants in evaluating fuel procurement in a multi-day timeframe
 - 2 to 3 days out

Approach

- SPP currently performs a multi-day assessment for reliability
 - Main objective is to determine whether long-lead time resources are needed for reliability
- If available, can the multi-day assessment be beneficial for MPs
- The following slides give information about the accuracy of SPP's assessment
- GECTF discussion of assessment and any subsequent follow-up

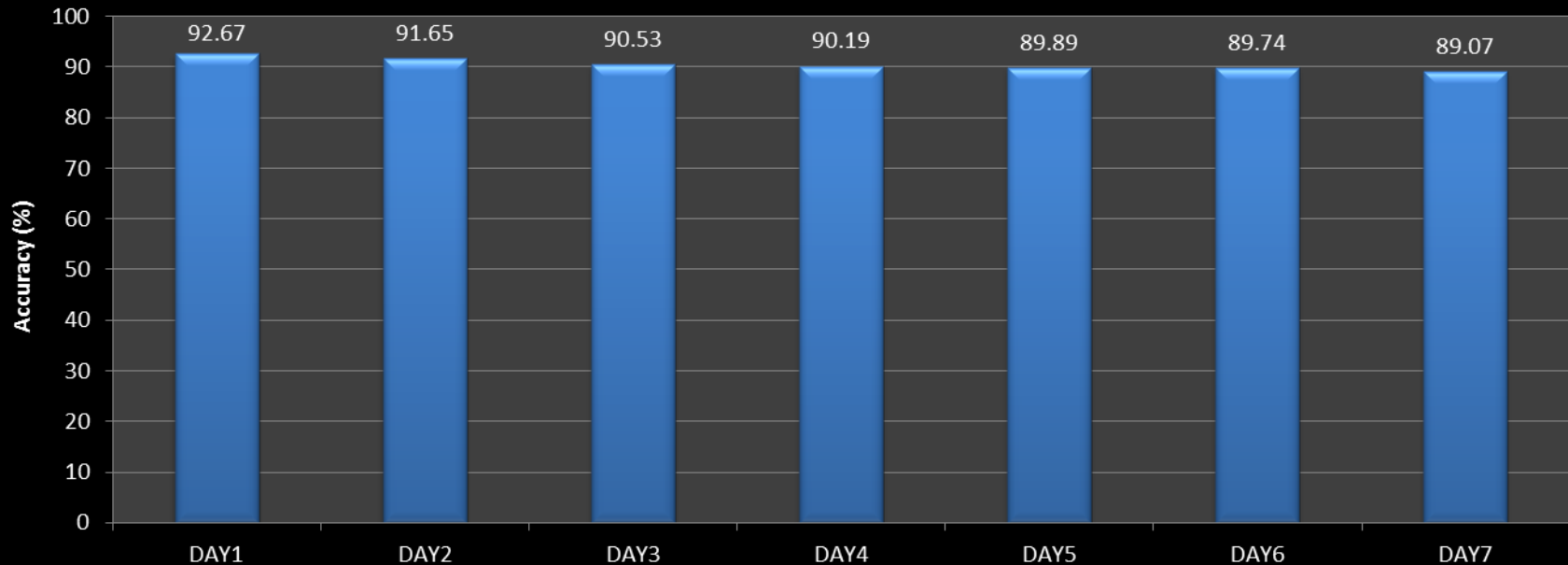
Unit Commitment

Unit Commitment Accuracy: Overall



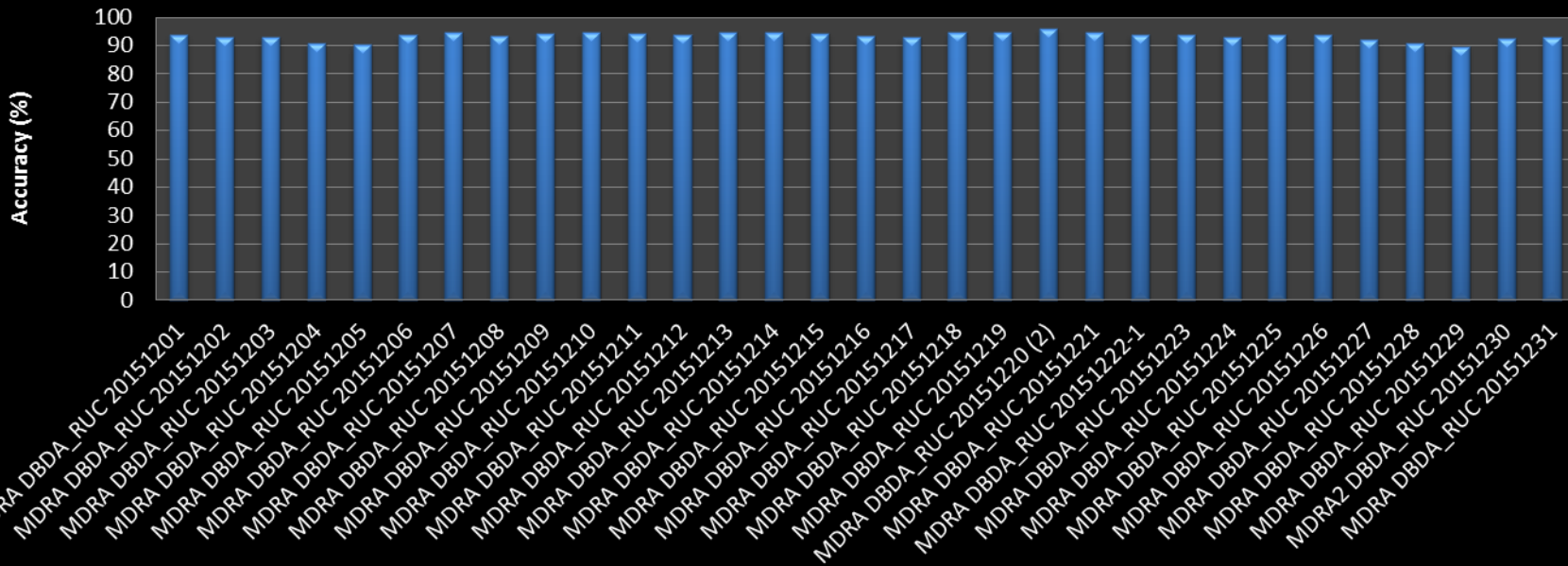
Unit Commitment Accuracy: Day

Unit Commitment Accuracy: Day



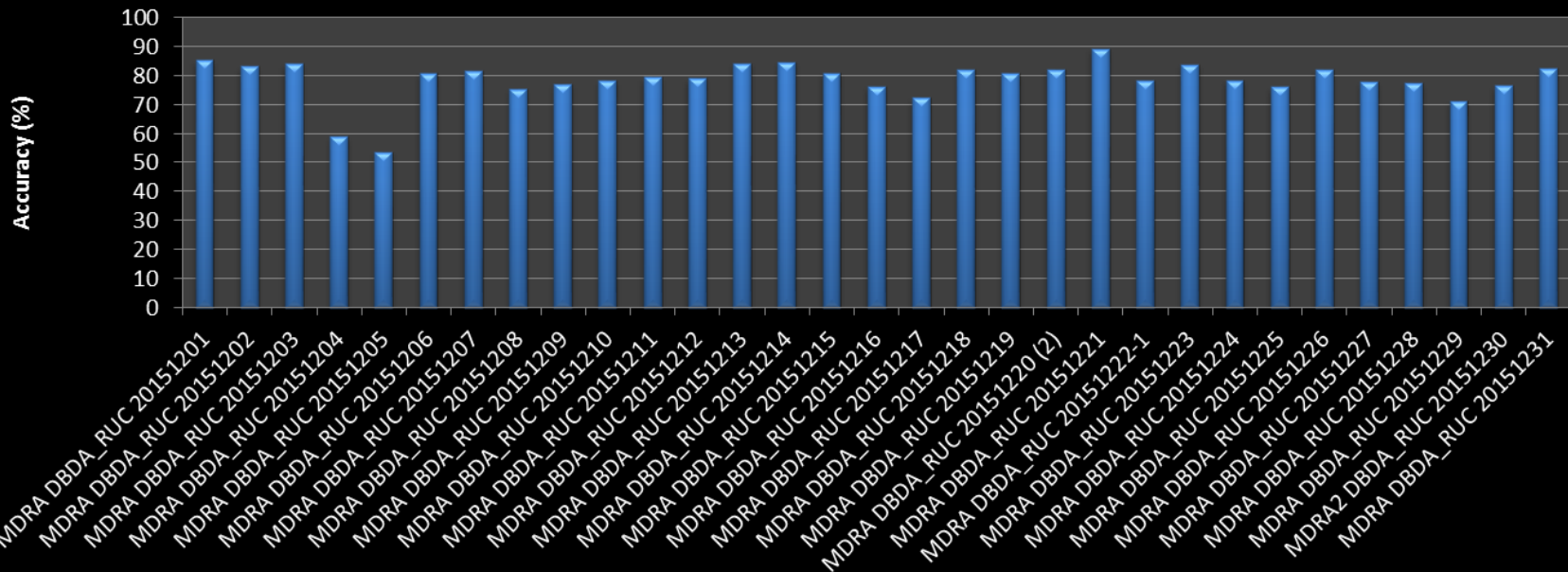
Unit Commitment Accuracy: Gas Only

Unit Commitment Accuracy: Market & Reliability, Gas Only

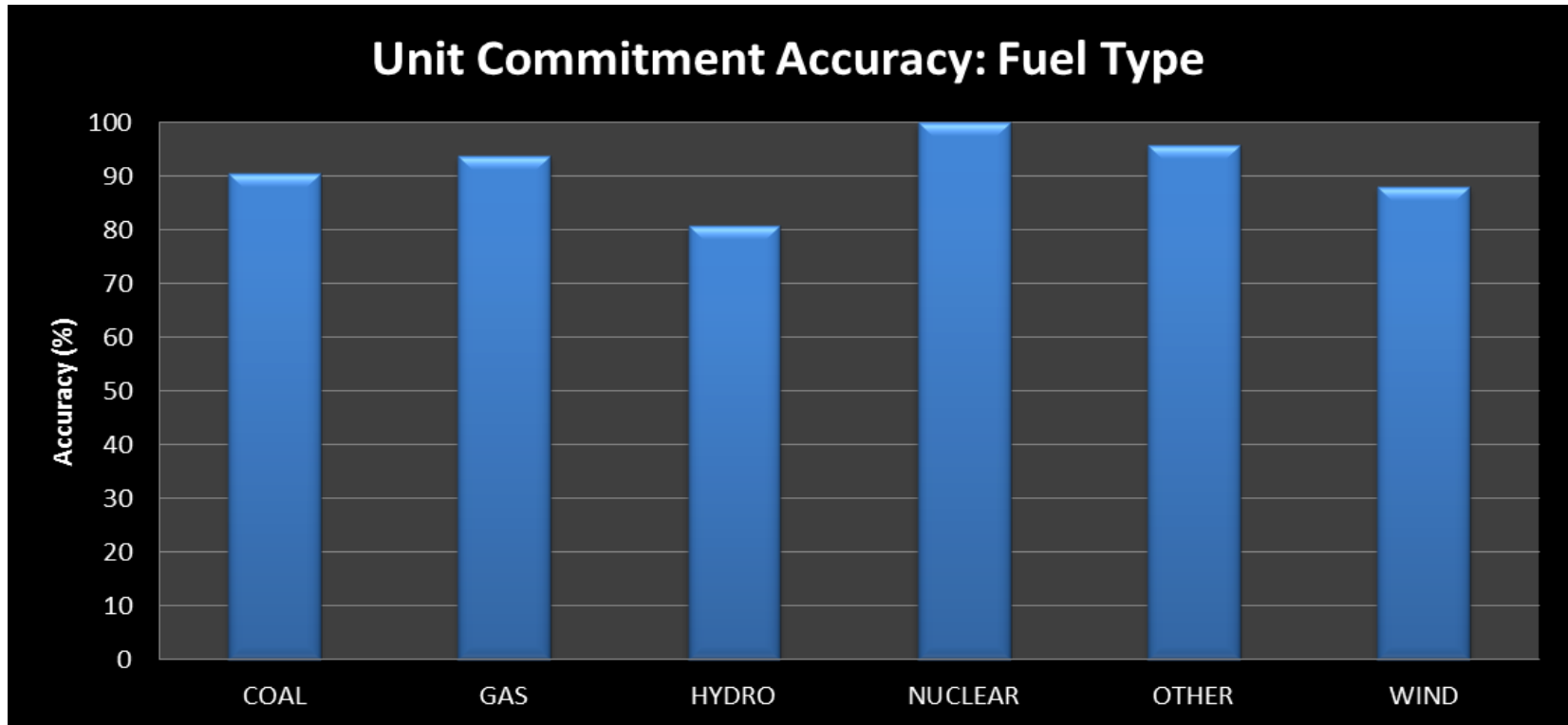


Unit Commitment Accuracy: Committed in MDRA, Gas Only

Unit Commitment Accuracy: Committed in MDRA, Gas Only

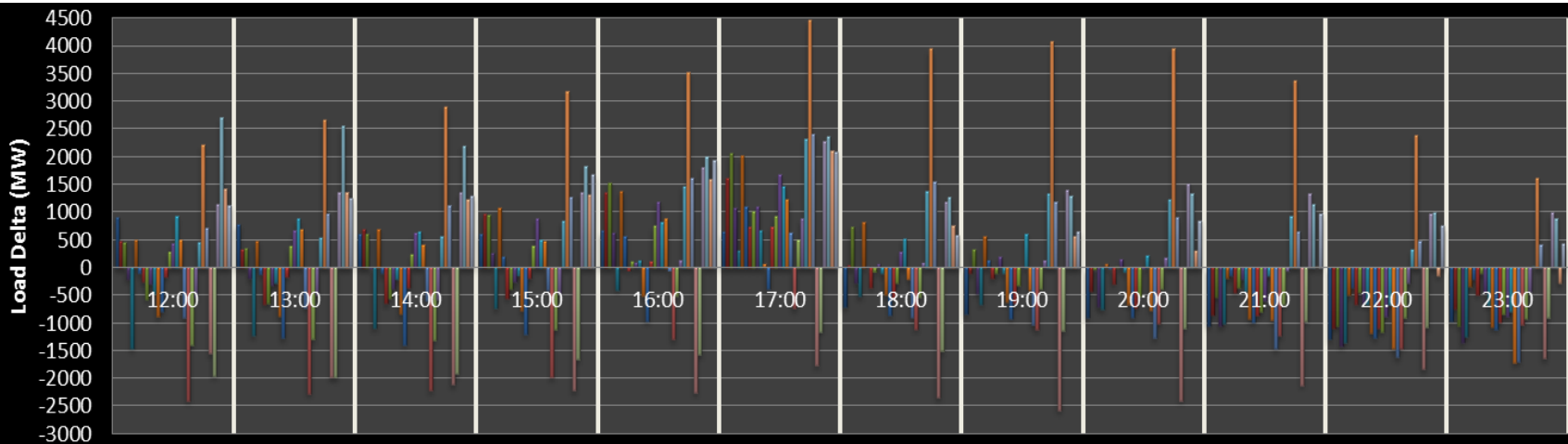
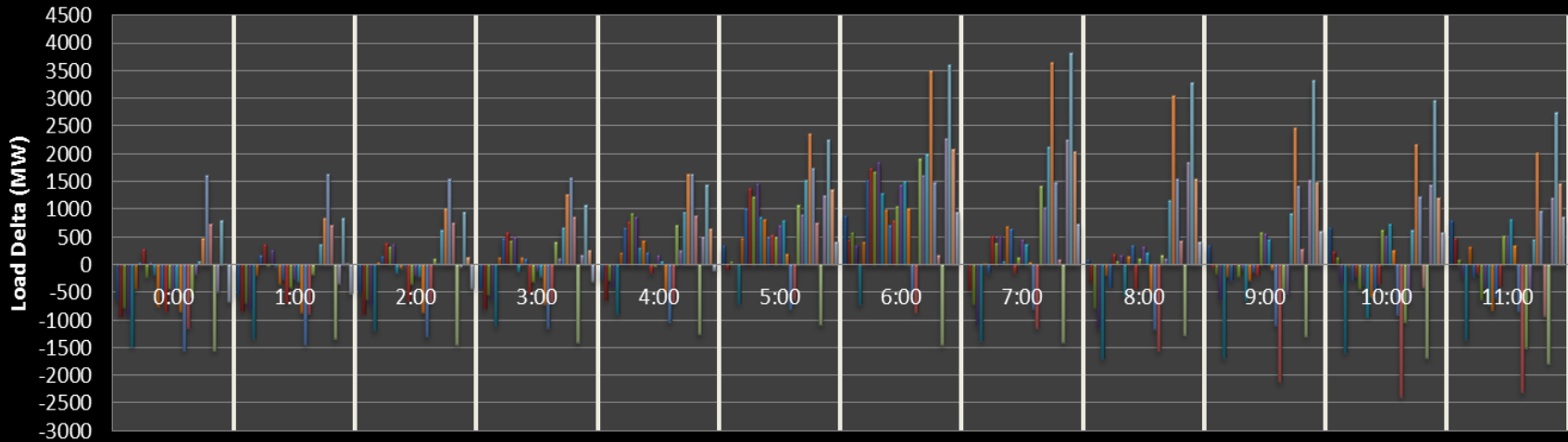


Unit Commitment Accuracy: Fuel Type



Load and Wind Forecast

Load Forecast Discrepancy



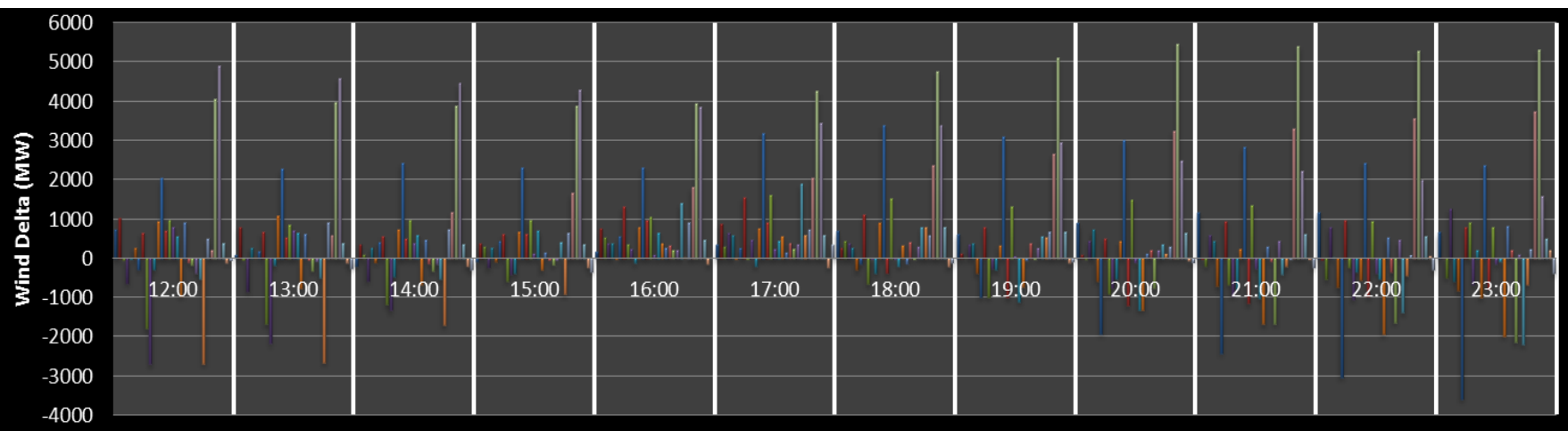
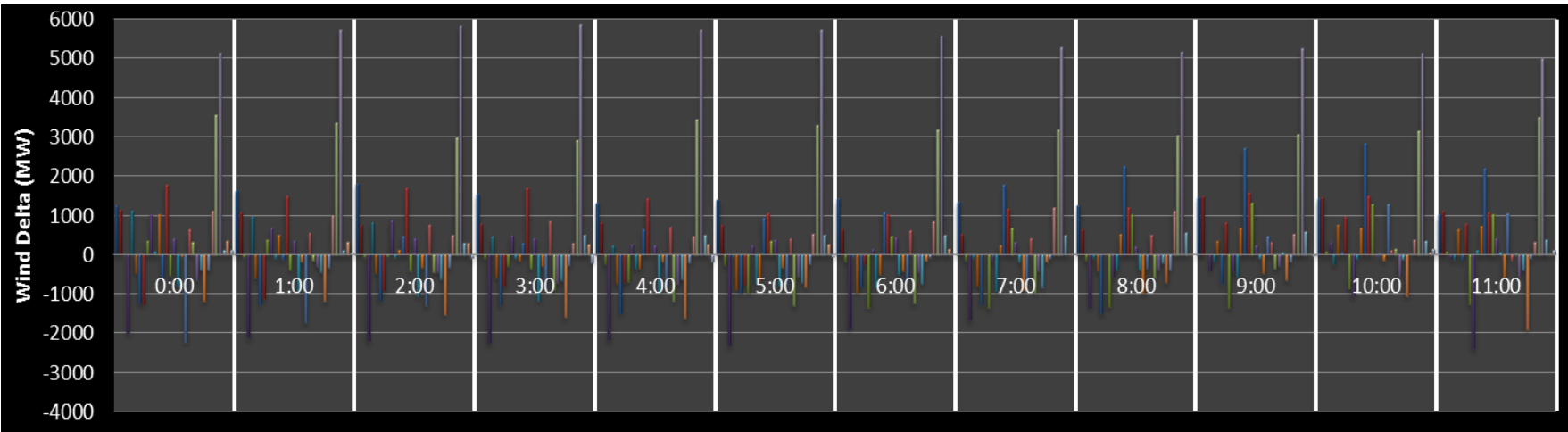
- | | | | | |
|--------------------------|----------------------------|--------------------------|--------------------------|------------------------------|
| ■ MDRA DBDA_RUC 20151201 | ■ MDRA DBDA_RUC 20151202 | ■ MDRA DBDA_RUC 20151203 | ■ MDRA DBDA_RUC 20151204 | ■ MDRA DBDA_RUC 20151205 |
| ■ MDRA DBDA_RUC 20151206 | ■ MDRA DBDA_RUC 20151207 | ■ MDRA DBDA_RUC 20151208 | ■ MDRA DBDA_RUC 20151209 | ■ MDRA DBDA_RUC 20151210 |
| ■ MDRA DBDA_RUC 20151211 | ■ MDRA DBDA_RUC 20151212 | ■ MDRA DBDA_RUC 20151213 | ■ MDRA DBDA_RUC 20151214 | ■ MDRA DBDA_RUC 20151215 |
| ■ MDRA DBDA_RUC 20151216 | ■ MDRA DBDA_RUC 20151217 | ■ MDRA DBDA_RUC 20151218 | ■ MDRA DBDA_RUC 20151219 | ■ MDRA DBDA_RUC 20151220 (2) |
| ■ MDRA DBDA_RUC 20151221 | ■ MDRA DBDA_RUC 20151222-1 | ■ MDRA DBDA_RUC 20151223 | ■ MDRA DBDA_RUC 20151224 | ■ MDRA DBDA_RUC 20151225 |
| ■ MDRA DBDA_RUC 20151226 | ■ MDRA DBDA_RUC 20151227 | ■ MDRA DBDA_RUC 20151228 | ■ MDRA DBDA_RUC 20151229 | ■ MDRA2 DBDA_RUC 20151230 |
| ■ MDRA DBDA_RUC 20151231 | | | | |



75

12

Wind Forecast Discrepancy



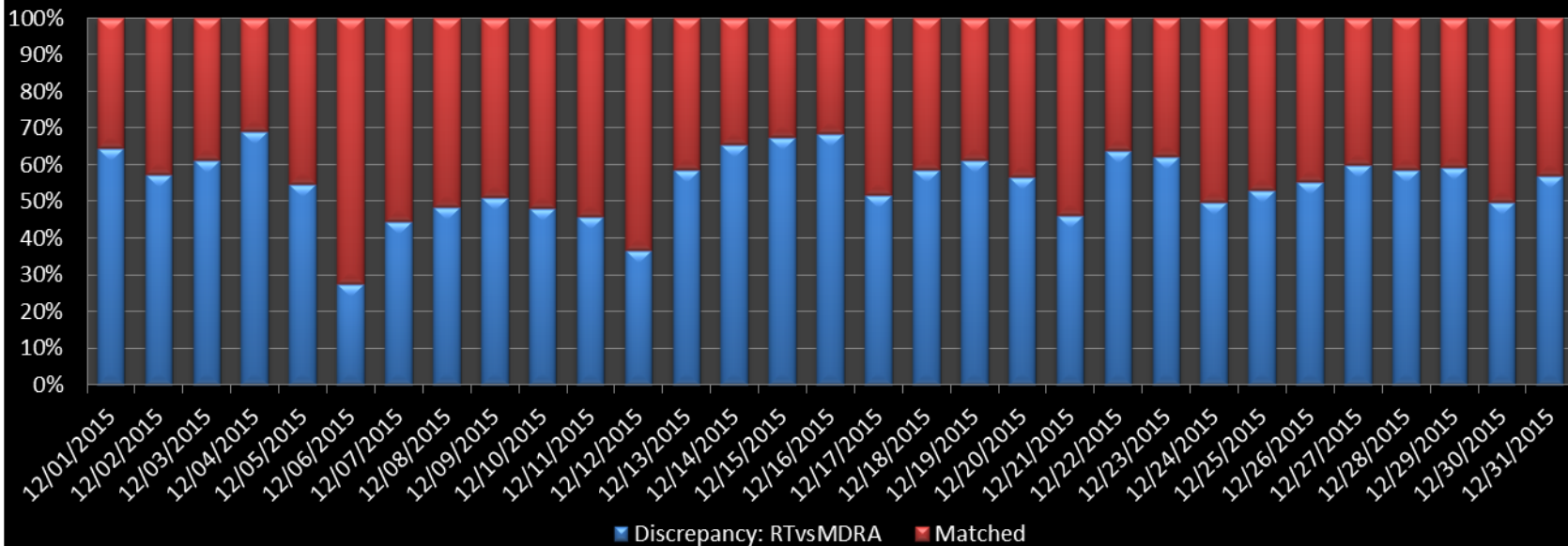
- MDRA DBDA_RUC 20151201
- MDRA DBDA_RUC 20151202
- MDRA DBDA_RUC 20151203
- MDRA DBDA_RUC 20151204
- MDRA DBDA_RUC 20151205
- MDRA DBDA_RUC 20151206
- MDRA DBDA_RUC 20151207
- MDRA DBDA_RUC 20151208
- MDRA DBDA_RUC 20151209
- MDRA DBDA_RUC 20151210
- MDRA DBDA_RUC 20151211
- MDRA DBDA_RUC 20151212
- MDRA DBDA_RUC 20151213
- MDRA DBDA_RUC 20151214
- MDRA DBDA_RUC 20151215
- MDRA DBDA_RUC 20151216
- MDRA DBDA_RUC 20151217
- MDRA DBDA_RUC 20151218
- MDRA DBDA_RUC 20151219
- MDRA DBDA_RUC 20151220 (2)
- MDRA DBDA_RUC 20151221
- MDRA DBDA_RUC 20151222-1
- MDRA DBDA_RUC 20151223
- MDRA DBDA_RUC 20151224
- MDRA DBDA_RUC 20151225
- MDRA DBDA_RUC 20151226
- MDRA DBDA_RUC 20151227
- MDRA DBDA_RUC 20151228
- MDRA DBDA_RUC 20151229
- MDRA2 DBDA_RUC 20151230
- MDRA DBDA_RUC 20151231



Constraints

Discrepancy between Real-Time Activated Constraints and MDRA

RT vs MDRA: Activated Constraints Discrepancy



Discrepancy between MDRA Activated Constraints and Real-Time

